

## Product datasheet for **TA333546**

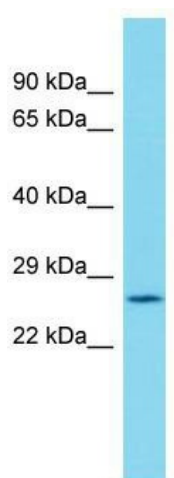
### C19orf52 (TIMM29) Rabbit Polyclonal Antibody

#### Product data:

Product Type:	Primary Antibodies
Applications:	WB
Recommended Dilution:	WB
Reactivity:	Human
Host:	Rabbit
Isotype:	IgG
Clonality:	Polyclonal
Immunogen:	The immunogen for Anti-C19orf52 Antibody is: synthetic peptide directed towards the C-terminal region of Human C19orf52. Synthetic peptide located within the following region: PQQ LHSETNERLFDEKYKPVVLTDDQVDQALWEEQVLQKEKKDRLALSQA
Formulation:	Liquid. Purified antibody supplied in 1x PBS buffer with 0.09% (w/v) sodium azide and 2% sucrose.
Purification:	Affinity Purified
Conjugation:	Unconjugated
Storage:	Store at -20°C as received.
Stability:	Stable for 12 months from date of receipt.
Predicted Protein Size:	29 kDa
Gene Name:	chromosome 19 open reading frame 52
Database Link:	<a href="#">NP_612367</a> <a href="#">Entrez Gene 90580 Human</a> <a href="#">Q9BSF4</a>
Background:	The function of this protein remains unknown.
Synonyms:	C19orf52
Note:	Immunogen sequence homology: Rat: 100%; Human: 100%; Dog: 93%; Pig: 93%; Mouse: 93%; Guinea pig: 93%; Horse: 79%; Bovine: 79%



[View online »](#)

**Product images:**

Host: Rabbit; Target Name: C19orf52; Sample Tissue: Placenta lysates; Antibody Dilution: 1.0 ug/ml.