

Product datasheet for **TA333545**

RIPPLY1 Rabbit Polyclonal Antibody

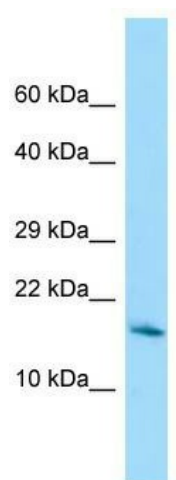
Product data:

Product Type:	Primary Antibodies
Applications:	WB
Recommended Dilution:	WB
Reactivity:	Human
Host:	Rabbit
Isotype:	IgG
Clonality:	Polyclonal
Immunogen:	The immunogen for Anti-RIPPLY1 Antibody is: synthetic peptide directed towards the middle region of Human RIPPLY1. Synthetic peptide located within the following region: RPWLSSTNDSPRQMRKLVDLAAGGATAAEVTKAESKFHHPVRLFWPKSRS
Formulation:	Liquid. Purified antibody supplied in 1x PBS buffer with 0.09% (w/v) sodium azide and 2% sucrose.
Purification:	Affinity Purified
Conjugation:	Unconjugated
Storage:	Store at -20°C as received.
Stability:	Stable for 12 months from date of receipt.
Predicted Protein Size:	16 kDa
Gene Name:	rippy transcriptional repressor 1
Database Link:	NP_612391 Entrez Gene 92129 Human Q0D2K3
Background:	This gene encodes a protein similar to a zebrafish protein which acts as a transcriptional repressor in and is required for somite segmentation in zebrafish embryos. Multiple transcript variants encoding different isoforms have been found for this gene.
Synonyms:	rippy1 homolog; rippy1 homolog (zebrafish); RP11-321G1.2
Note:	Immunogen sequence homology: Human: 100%; Rat: 79%; Horse: 79%; Bovine: 79%



[View online »](#)

Product images:



Host: Rabbit; Target Name: RIPPLY1; Sample
Tissue: ACHN Whole Cell lysates; Antibody
Dilution: 1.0 ug/ml