

Product datasheet for **TA333543**

zinc finger protein 655 (ZNF655) Rabbit Polyclonal Antibody

Product data:

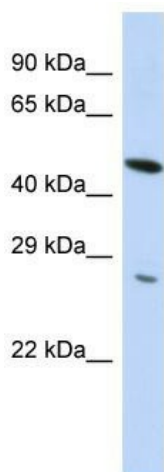
Product Type:	Primary Antibodies
Applications:	WB
Recommended Dilution:	WB
Reactivity:	Human
Host:	Rabbit
Isotype:	IgG
Clonality:	Polyclonal
Immunogen:	The immunogen for Anti-ZNF655 Antibody is: synthetic peptide directed towards the N-terminal region of HUMAN ZNF655. Synthetic peptide located within the following region: QITISKETFTSEKNNECHEPEKSFSLDSTIDADQRVLRIQNTDDNDKYDM
Formulation:	Liquid. Purified antibody supplied in 1x PBS buffer with 0.09% (w/v) sodium azide and 2% sucrose. <i>Note that this product is shipped as lyophilized powder to China customers.</i>
Purification:	Affinity Purified
Conjugation:	Unconjugated
Storage:	Store at -20°C as received.
Stability:	Stable for 12 months from date of receipt.
Predicted Protein Size:	54 kDa
Gene Name:	zinc finger protein 655
Database Link:	NP_612503 Entrez Gene 79027 Human Q8N720
Background:	ZNF655 is a zinc finger protein. The zinc finger proteins are involved in DNA binding and protein-protein interactions.
Synonyms:	VIK; VIK-1
Note:	Immunogen sequence homology: Human: 100%; Dog: 85%; Rat: 85%; Horse: 85%; Pig: 77%; Mouse: 77%; Guinea pig: 77%



[View online »](#)

Protein Families: Transcription Factors

Product images:



Host: Rabbit

Target Name: ZNF655

Sample Tissue: HepG2 Cell Lysate

Antibody Dilution: 1.0 μ g/ml

Host: Rabbit; Target Name: ZNF655; Sample Tissue: HepG2 Whole Cell lysates; Antibody Dilution: 1.0 ug/ml