

## Product datasheet for **TA333542**

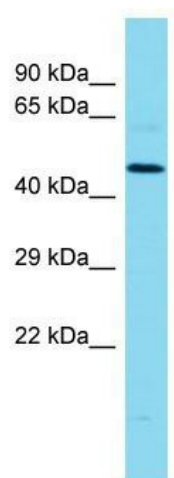
### MLIP Rabbit Polyclonal Antibody

#### Product data:

Product Type:	Primary Antibodies
Applications:	WB
Recommended Dilution:	WB
Reactivity:	Human
Host:	Rabbit
Isotype:	IgG
Clonality:	Polyclonal
Immunogen:	The immunogen for Anti-MLIP Antibody is: synthetic peptide directed towards the middle region of Human MLIP. Synthetic peptide located within the following region: HGMAPQKQKHGQQYKTKSSYKAFAAIPTNTLLLEQKALDEPAKTESVSKDN
Formulation:	Liquid. Purified antibody supplied in 1x PBS buffer with 0.09% (w/v) sodium azide and 2% sucrose.
Purification:	Affinity Purified
Conjugation:	Unconjugated
Storage:	Store at -20°C as received.
Stability:	Stable for 12 months from date of receipt.
Predicted Protein Size:	50 kDa
Gene Name:	muscular LMNA-interacting protein
Database Link:	<a href="#">NP_612636</a> <a href="#">Entrez Gene 90523 Human</a> <a href="#">Q5VWP3</a>
Background:	The function of this protein remains unknown.
Synonyms:	C6orf142; CIP
Note:	Immunogen sequence homology: Dog: 100%; Pig: 100%; Rat: 100%; Horse: 100%; Human: 100%; Bovine: 100%



[View online »](#)

**Product images:**

Host: Rabbit; Target Name: MLIP; Sample Tissue: MCF7 Whole Cell lysates; Antibody Dilution: 1.0 ug/ml.