

Product datasheet for **TA333539**

TTDN1 (MPLKIP) Rabbit Polyclonal Antibody

Product data:

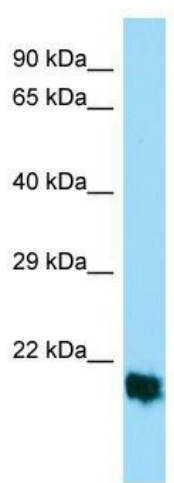
Product Type:	Primary Antibodies
Applications:	WB
Recommended Dilution:	WB
Reactivity:	Human
Host:	Rabbit
Isotype:	IgG
Clonality:	Polyclonal
Immunogen:	The immunogen for Anti-MPLKIP Antibody is: synthetic peptide directed towards the middle region of Human MPLKIP. Synthetic peptide located within the following region: PGGYPGSYSRSPAGSQQQFGYSPGQQQTHPQGSPTSTPFGSGRVREKRM
Formulation:	Liquid. Purified antibody supplied in 1x PBS buffer with 0.09% (w/v) sodium azide and 2% sucrose.
Purification:	Affinity Purified
Conjugation:	Unconjugated
Storage:	Store at -20°C as received.
Stability:	Stable for 12 months from date of receipt.
Predicted Protein Size:	20 kDa
Gene Name:	M-phase specific PLK1 interacting protein
Database Link:	NP_619646 Entrez Gene 136647 Human Q8TAP9
Background:	The protein encoded by this gene localizes to the centrosome during mitosis and to the midbody during cytokinesis. The protein is phosphorylated by cyclin-dependent kinase 1 during mitosis and subsequently interacts with polo-like kinase 1. The protein is thought to function in regulating mitosis and cytokinesis. Mutations in this gene result in nonphotosensitive trichothiodystrophy.
Synonyms:	ABHS; C7orf11; ORF20; TTD4



[View online »](#)

Note: Immunogen sequence homology: Dog: 100%; Pig: 100%; Rat: 100%; Human: 100%; Bovine: 100%; Rabbit: 100%; Guinea pig: 100%; Mouse: 93%

Product images:



Host: Rabbit; Target Name: MPLKIP; Sample Tissue: HepG2 Whole Cell lysates; Antibody Dilution: 1.0 ug/ml