

Product datasheet for **TA333537**

G0 Protein alpha (GNAO1) Rabbit Polyclonal Antibody

Product data:

Product Type:	Primary Antibodies
Applications:	WB
Recommended Dilution:	WB
Reactivity:	Human, Rat
Host:	Rabbit
Isotype:	IgG
Clonality:	Polyclonal
Immunogen:	The immunogen for Anti-GNAO1 Antibody: synthetic peptide directed towards the N terminal of human GNAO1. Synthetic peptide located within the following region: PVVYSNTIQSLAAIVRAMDTLGLIEYGDKERKADAKMVCDVSRMEDTEPF
Formulation:	Liquid. Purified antibody supplied in 1x PBS buffer with 0.09% (w/v) sodium azide and 2% sucrose. <i>Note that this product is shipped as lyophilized powder to China customers.</i>
Purification:	Affinity Purified
Conjugation:	Unconjugated
Storage:	Store at -20°C as received.
Stability:	Stable for 12 months from date of receipt.
Predicted Protein Size:	40 kDa
Gene Name:	G protein subunit alpha o1
Database Link:	NP_620073 Entrez Gene 50664 Rat Entrez Gene 2775 Human P09471
Background:	Activated Goalpha interacted directly with PLZF, and enhanced its function as a transcriptional and cell growth suppressor. Goalpha might play a role in mediating extracellular signal-regulated kinase activation by G protein-coupled receptors in the brain
Synonyms:	EIEE17; G-ALPHA-o; GNAO; HLA-DQB1
Note:	Immunogen sequence homology: Dog: 100%; Horse: 100%; Human: 100%; Sheep: 100%; Bovine: 100%; Rabbit: 100%; Pig: 93%; Rat: 93%; Zebrafish: 93%; Guinea pig: 93%; Mouse: 79%

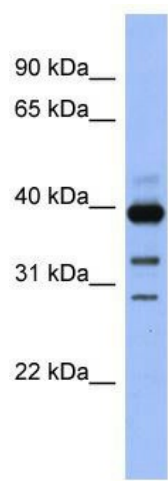


[View online »](#)

Protein Families: Druggable Genome

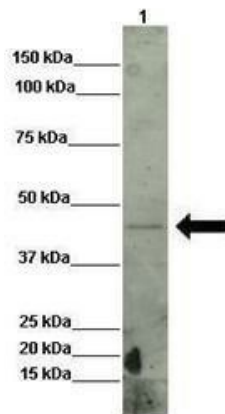
Protein Pathways: Long-term depression, Melanogenesis

Product images:



WB Suggested Anti-GNAO1 Antibody Titration:
0.2-1 ug/ml; ELISA Titer: 1: 1562500; Positive
Control: Human brain

GNAO1



Lanes: Lane 1: INS1 lysate; Primary Antibody
Dilution: 1: 1000; Secondary Antibody: Donkey
anti-rabbit-HRP; Secondary Antibody Dilution: 1:
1000; Gene Name: GNAO1; Submitted by: Olivier
Costa, Diabetes research center VUB