

## Product datasheet for **TA333536**

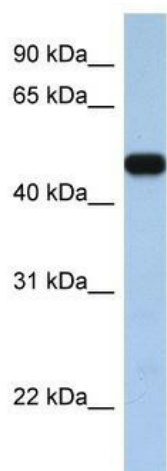
### SLC25A46 Rabbit Polyclonal Antibody

#### Product data:

Product Type:	Primary Antibodies
Applications:	WB
Recommended Dilution:	WB
Reactivity:	Human
Host:	Rabbit
Isotype:	IgG
Clonality:	Polyclonal
Immunogen:	The immunogen for Anti-SLC25A46 Antibody: synthetic peptide directed towards the C terminal of human SLC25A46. Synthetic peptide located within the following region: LKRKTYNSHLAESTSPVQSMLDAYFPELIANFAASLCSDVILYPLETVLH
Formulation:	Liquid. Purified antibody supplied in 1x PBS buffer with 0.09% (w/v) sodium azide and 2% sucrose.
Purification:	Affinity Purified
Conjugation:	Unconjugated
Storage:	Store at -20°C as received.
Stability:	Stable for 12 months from date of receipt.
Predicted Protein Size:	46 kDa
Gene Name:	solute carrier family 25 member 46
Database Link:	<a href="#">NP_620128</a> <a href="#">Entrez Gene 91137 Human</a> <a href="#">Q96AG3</a>
Background:	SLC25A46 is a members of the solute carrier family 25 (SLC25) which is known to transport molecules over the mitochondrial membrane.SLC25A46 belongs to the SLC25 family of mitochondrial carrier proteins (Haitina et al., 2006 [PubMed 16949250]). [supplied by OMIM]
Synonyms:	HMSN6B
Note:	Immunogen sequence homology: Pig: 100%; Human: 100%; Mouse: 100%; Rat: 93%; Horse: 93%; Guinea pig: 93%; Dog: 86%; Rabbit: 86%



[View online »](#)

**Product images:**

WB Suggested Anti-SLC25A46 Antibody Titration: 0.2-1 ug/ml; Positive Control: MCF7 cell lysate; SLC25A46 is supported by BioGPS gene expression data to be expressed in MCF7