

## Product datasheet for **TA333535**

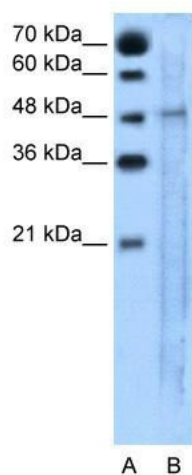
### SLC25A46 Rabbit Polyclonal Antibody

#### Product data:

Product Type:	Primary Antibodies
Applications:	WB
Recommended Dilution:	WB
Reactivity:	Human
Host:	Rabbit
Isotype:	IgG
Clonality:	Polyclonal
Immunogen:	The immunogen for Anti-SLC25A46 Antibody: synthetic peptide directed towards the N terminal of human SLC25A46. Synthetic peptide located within the following region: RSFSTGSDLGHWVTTPDIPGSRNLHWGEKSPPYGVPTTSTPYEGPTEEP
Formulation:	Liquid. Purified antibody supplied in 1x PBS buffer with 0.09% (w/v) sodium azide and 2% sucrose.
Purification:	Affinity Purified
Conjugation:	Unconjugated
Storage:	Store at -20°C as received.
Stability:	Stable for 12 months from date of receipt.
Predicted Protein Size:	46 kDa
Gene Name:	solute carrier family 25 member 46
Database Link:	<a href="#">NP_620128</a> <a href="#">Entrez Gene 91137 Human</a> <a href="#">Q96AG3</a>
Background:	SLC25A46 is a members of the solute carrier family 25 (SLC25) which is known to transport molecules over the mitochondrial membrane.
Synonyms:	HMSN6B
Note:	Immunogen sequence homology: Pig: 100%; Rat: 100%; Horse: 100%; Human: 100%; Mouse: 100%; Rabbit: 100%; Zebrafish: 100%; Bovine: 93%



[View online »](#)

**Product images:**

WB Suggested Anti-SLC25A46 Antibody Titration: 5.0 ug/ml; Positive Control: Jurkat cell lysate; SLC25A46 is supported by BioGPS gene expression data to be expressed in Jurkat