

Product datasheet for **TA333533**

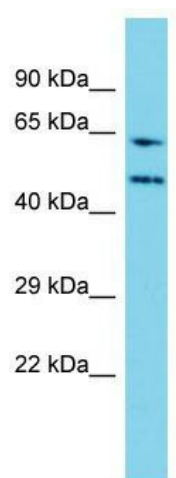
WDR85 (DPH7) Rabbit Polyclonal Antibody

Product data:

Product Type:	Primary Antibodies
Applications:	WB
Recommended Dilution:	WB
Reactivity:	Human
Host:	Rabbit
Isotype:	IgG
Clonality:	Polyclonal
Immunogen:	The immunogen for Anti-WDR85 Antibody is: synthetic peptide directed towards the N-terminal region of Human WDR85. Synthetic peptide located within the following region: CPLQGCRHLLACGTYQLRRPEDRPAGPQNKGGMEVKEPQVRLGRLFLYSF
Formulation:	Liquid. Purified antibody supplied in 1x PBS buffer with 0.09% (w/v) sodium azide and 2% sucrose. <i>Note that this product is shipped as lyophilized powder to China customers.</i>
Purification:	Affinity Purified
Conjugation:	Unconjugated
Storage:	Store at -20°C as received.
Stability:	Stable for 12 months from date of receipt.
Predicted Protein Size:	50 kDa
Gene Name:	diphthamide biosynthesis 7
Database Link:	NP_620133 Entrez Gene 92715 Human Q9BTV6
Background:	WDR85 is a WD repeat-containing protein that plays a role in the first step of diphthamide biosynthesis.
Synonyms:	C9orf112; RRT2; WDR85
Note:	Immunogen sequence homology: Human: 100%



[View online »](#)

Product images:

Host: Rabbit; Target Name: WDR85; Sample
Tissue: Jurkat Whole Cell lysates; Antibody
Dilution: 1.0 ug/ml.