

## Product datasheet for **TA333532**

### **C6orf72 (GINM1) Rabbit Polyclonal Antibody**

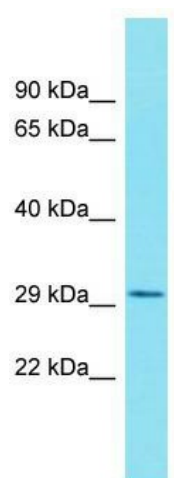
#### **Product data:**

|                                |   |
|--------------------------------|---|
| <b>Product Type:</b>           | Primary Antibodies  |
| <b>Applications:</b>           | WB  |
| <b>Recommended Dilution:</b>   | WB  |
| <b>Reactivity:</b>             | Human   |
| <b>Host:</b>                   | Rabbit  |
| <b>Isotype:</b>                | IgG   |
| <b>Clonality:</b>              | Polyclonal  |
| <b>Immunogen:</b>              | The immunogen for Anti-GINM1 Antibody is: synthetic peptide directed towards the middle region of Human GINM1. Synthetic peptide located within the following region:<br>SVRILVHEWPMTSGSSLQLIVIQEEVVEIDGKQVQKQDVTEIDILVKNRG |
| <b>Formulation:</b>            | Liquid. Purified antibody supplied in 1x PBS buffer with 0.09% (w/v) sodium azide and 2% sucrose.   |
| <b>Purification:</b>           | Affinity Purified   |
| <b>Conjugation:</b>            | Unconjugated  |
| <b>Storage:</b>                | Store at -20°C as received.   |
| <b>Stability:</b>              | Stable for 12 months from date of receipt.  |
| <b>Predicted Protein Size:</b> | 34 kDa  |
| <b>Gene Name:</b>              | glycoprotein integral membrane 1  |
| <b>Database Link:</b>          | <a href="#">NP_620140</a><br><a href="#">Entrez Gene 116254 Human</a><br><a href="#">Q9NU53</a>   |
| <b>Background:</b>             | The function of this protein remains unknown.   |
| <b>Synonyms:</b>               | C6orf72; dJ12G14.2  |
| <b>Note:</b>                   | Immunogen sequence homology: Human: 100%; Dog: 93%; Rat: 93%; Horse: 93%; Bovine: 93%; Pig: 86%; Guinea pig: 86%; Mouse: 79%; Rabbit: 79%   |
| <b>Protein Families:</b>       | Transmembrane   |



[View online »](#)

## Product images:



Host: Rabbit; Target Name: GINM1; Sample  
Tissue: PANC1 Whole Cell lysates; Antibody  
Dilution: 1.0 ug/ml.