

Product datasheet for **TA333531**

MAPK15 Rabbit Polyclonal Antibody

Product data:

Product Type:	Primary Antibodies
Applications:	IF, WB
Recommended Dilution:	WB, IF
Reactivity:	Human
Host:	Rabbit
Isotype:	IgG
Clonality:	Polyclonal
Immunogen:	The immunogen for Anti-MAPK15 Antibody: synthetic peptide directed towards the middle region of human MAPK15. Synthetic peptide located within the following region: GHDPAEHESPRAAKNVPRQNSAPLLQTALLNGERPPGAKEAPPLTSLV
Formulation:	Liquid. Purified antibody supplied in 1x PBS buffer with 0.09% (w/v) sodium azide and 2% sucrose. <i>Note that this product is shipped as lyophilized powder to China customers.</i>
Purification:	Affinity Purified
Conjugation:	Unconjugated
Storage:	Store at -20°C as received.
Stability:	Stable for 12 months from date of receipt.
Predicted Protein Size:	60 kDa
Gene Name:	mitogen-activated protein kinase 15
Database Link:	NP_620590 Entrez Gene 225689 Human Q8TD08
Background:	In vitro, MAPK15 phosphorylates MBP.
Synonyms:	ERK7; ERK8
Note:	Immunogen sequence homology: Human: 100%
Protein Families:	Druggable Genome, Protein Kinase



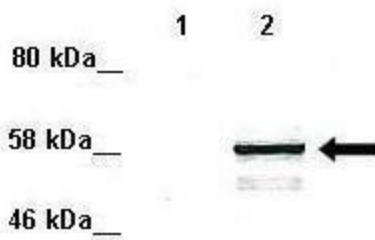
[View online »](#)

Product images:



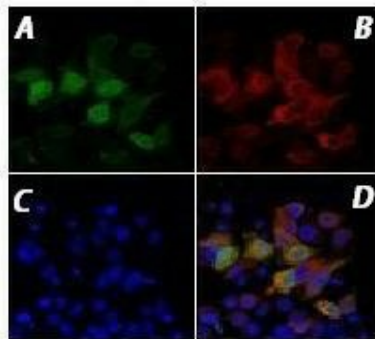
MAPK15

WB Suggested Anti-MAPK15 Antibody Titration:
0.2-1 ug/ml; ELISA Titer: 1: 312500; Positive
Control: MCF7 cell lysate



Lanes: Lane 1: 50 ug untransfected HEK-293T
lysate; Lane 2: 50 ug MAPK15 transfected HEK-
293T lysate; Primary Antibody Dilution: 1: 2000;
Secondary Antibody: Anti-rabbit-HRP; Secondary
Antibody Dilution: 1: 1000; Gene Name: MAPK15;
Submitted by: David Col

MAPK15



A: Anti-HA-Alexa Fluor 488
B: MAPK15 C: DAPI D: Merge

Sample Type: HA-MAPK15 transfected HeLa cells
Primary Antibody Dilution: 1: 200; Secondary
Antibody: Anti-rabbit-Alexa Fluor 555; Secondary
Antibody dilution: 1: 800; Color/Signal
Descriptions: A: Anti-HA-Alexa Fluor 488 B:
MAPK15 C: DAPI D: Merge; Gene N