

Product datasheet for TA333530

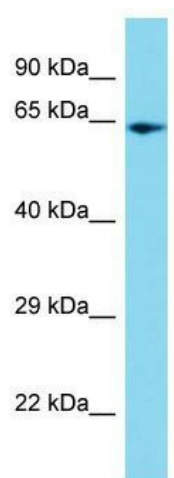
PPIL4 Rabbit Polyclonal Antibody

Product data:

Product Type:	Primary Antibodies
Applications:	WB
Recommended Dilution:	WB
Reactivity:	Human
Host:	Rabbit
Isotype:	IgG
Clonality:	Polyclonal
Immunogen:	The immunogen for Anti-PPIL4 Antibody is: synthetic peptide directed towards the C-terminal region of Human PPIL4. Synthetic peptide located within the following region: RSRSRERDGHYSNSHKSQYQTDLYERERSKKRDRSRSPKSKDKEKSKYR
Formulation:	Liquid. Purified antibody supplied in 1x PBS buffer with 0.09% (w/v) sodium azide and 2% sucrose. <i>Note that this product is shipped as lyophilized powder to China customers.</i>
Purification:	Affinity Purified
Conjugation:	Unconjugated
Storage:	Store at -20°C as received.
Stability:	Stable for 12 months from date of receipt.
Predicted Protein Size:	57 kDa
Gene Name:	peptidylprolyl isomerase like 4
Database Link:	NP_624311 Entrez Gene 85313 Human Q8WUA2
Background:	This gene is a member of the cyclophilin family of peptidylprolyl isomerases. The cyclophilins are a highly conserved family, members of which play an important role in protein folding, immunosuppression by cyclosporin A, and infection of HIV-1 virions.
Synonyms:	HDCME13P
Note:	Immunogen sequence homology: Dog: 100%; Pig: 100%; Horse: 100%; Human: 100%; Mouse: 100%; Bovine: 93%; Rat: 92%; Rabbit: 86%



[View online »](#)

Product images:

Host: Rabbit; Target Name: PPIL4; Sample Tissue: HepG2 Whole Cell lysates; Antibody Dilution: 1.0 ug/ml.