

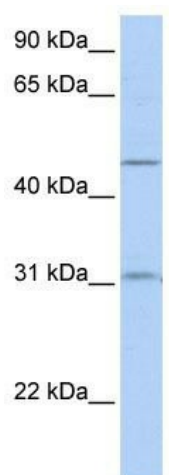
Product datasheet for TA333529

SLC39A11 Rabbit Polyclonal Antibody

Product data:

Product Type:	Primary Antibodies
Applications:	WB
Recommended Dilution:	WB
Reactivity:	Human
Host:	Rabbit
Isotype:	IgG
Clonality:	Polyclonal
Immunogen:	The immunogen for Anti-SLC39A11 Antibody: synthetic peptide directed towards the middle region of human SLC39A11. Synthetic peptide located within the following region: GGSSWRRRIALLILAITIHNVPEGLAVGVGFGAIEKTASATFESARNLAIG
Formulation:	Liquid. Purified antibody supplied in 1x PBS buffer with 0.09% (w/v) sodium azide and 2% sucrose.
Purification:	Affinity Purified
Conjugation:	Unconjugated
Storage:	Store at -20°C as received.
Stability:	Stable for 12 months from date of receipt.
Predicted Protein Size:	35 kDa
Gene Name:	solute carrier family 39 member 11
Database Link:	NP_631916 Entrez Gene 201266 Human Q8N1S5
Background:	SLC39A11 belongs to the ZIP transporter (TC 2.A.5) family. It is a multi-pass membrane protein. SLC39A11 may act as a zinc-influx transporter.
Synonyms:	C17orf26; ZIP11
Note:	Immunogen sequence homology: Dog: 100%; Pig: 100%; Rat: 100%; Horse: 100%; Human: 100%; Mouse: 100%; Bovine: 100%; Rabbit: 100%; Guinea pig: 93%
Protein Families:	Transmembrane


[View online »](#)

Product images:

WB Suggested Anti-SLC39A11 Antibody Titration:
0.2-1 ug/ml; ELISA Titer: 1:62500; Positive Control:
721_B cell lysate