

Product datasheet for **TA333526**

C1orf105 Rabbit Polyclonal Antibody

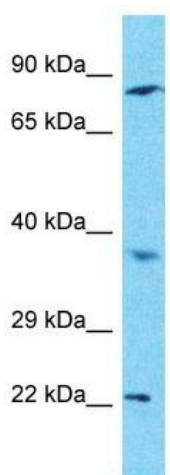
Product data:

Product Type:	Primary Antibodies
Applications:	WB
Recommended Dilution:	WB
Reactivity:	Human
Host:	Rabbit
Isotype:	IgG
Clonality:	Polyclonal
Immunogen:	The immunogen for Anti-C1orf105 Antibody is: synthetic peptide directed towards the C-terminal region of Human C1orf105. Synthetic peptide located within the following region: PEPFHDDIPTESIHRYLPILGPRTAVFHGLLTEAYKTLKERQRSSLPRKE
Formulation:	Liquid. Purified antibody supplied in 1x PBS buffer with 0.09% (w/v) sodium azide and 2% sucrose. <i>Note that this product is shipped as lyophilized powder to China customers.</i>
Purification:	Affinity Purified
Conjugation:	Unconjugated
Storage:	Store at -20°C as received.
Stability:	Stable for 12 months from date of receipt.
Predicted Protein Size:	20 kDa
Gene Name:	chromosome 1 open reading frame 105
Database Link:	NP_640333 Entrez Gene 92346 Human O95561
Background:	The function of this protein remains unknown.
Synonyms:	RP1-106H8.1
Note:	Immunogen sequence homology: Human: 100%



[View online »](#)

Product images:



Host: Rabbit
Target Name: C1orf105
Sample Tissue: HepG2 Cell Lysate
Antibody Dilution: 1.0 μ g/ml

Host: Rabbit; Target Name: C1orf105; Sample Tissue: HepG2 Whole Cell lysates; Antibody Dilution: 1.0 ug/ml.