

## Product datasheet for TA333522

### Angel1 Rabbit Polyclonal Antibody

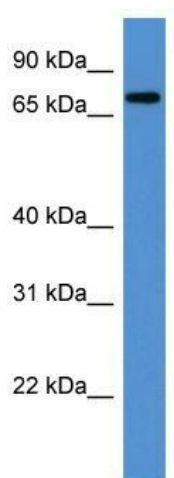
#### Product data:

Product Type:	Primary Antibodies
Applications:	WB
Recommended Dilution:	WB
Reactivity:	Mouse
Host:	Rabbit
Isotype:	IgG
Clonality:	Polyclonal
Immunogen:	The immunogen for Anti-Angel1 Antibody: synthetic peptide corresponding to a region of Mouse. Synthetic peptide located within the following region: SPLYNFIRDGELQYNGMPAWKVSGQEDFSHQLYQRKLQAPLWPSSLGITD
Formulation:	Liquid. Purified antibody supplied in 1x PBS buffer with 0.09% (w/v) sodium azide and 2% sucrose.
Purification:	Affinity Purified
Conjugation:	Unconjugated
Storage:	Store at -20°C as received.
Stability:	Stable for 12 months from date of receipt.
Predicted Protein Size:	73 kDa
Gene Name:	angel homolog 1 (Drosophila)
Database Link:	<a href="#">NP_653107</a> <a href="#">Entrez Gene 68737 Mouse</a> <a href="#">Q8VCU0</a>
Background:	The function of Angel1 remains unknown.
Synonyms:	FLJ60172; KIAA0759
Note:	Immunogen sequence homology: Dog: 100%; Pig: 100%; Rat: 100%; Horse: 100%; Human: 100%; Mouse: 100%; Bovine: 100%; Rabbit: 100%; Guinea pig: 100%



[View online »](#)

## Product images:



WB Suggested Anti-Angel1 Antibody Titration:  
0.2-1 ug/ml; ELISA Titer: 1: 312500; Positive  
Control: Mouse Liver