

Product datasheet for TA333521

RPIA Rabbit Polyclonal Antibody

Product data:

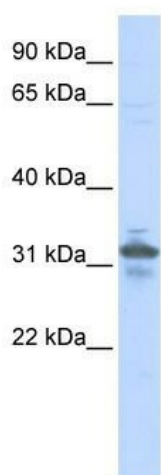
Product Type:	Primary Antibodies
Applications:	WB
Recommended Dilution:	WB
Reactivity:	Human
Host:	Rabbit
Isotype:	IgG
Clonality:	Polyclonal
Immunogen:	The immunogen for Anti-RPIA Antibody: synthetic peptide directed towards the N terminal of human RPIA. Synthetic peptide located within the following region: MQRPGPFSTLYGRVLAPLPGRAGGAASGGGNSWDLPGSHVRLPGRAQSG
Formulation:	Liquid. Purified antibody supplied in 1x PBS buffer with 0.09% (w/v) sodium azide and 2% sucrose. <i>Note that this product is shipped as lyophilized powder to China customers.</i>
Purification:	Affinity Purified
Conjugation:	Unconjugated
Storage:	Store at -20°C as received.
Stability:	Stable for 12 months from date of receipt.
Predicted Protein Size:	33 kDa
Gene Name:	ribose 5-phosphate isomerase A
Database Link:	NP_653164 Entrez Gene 22934 Human P49247
Background:	Defects in RPIA are the cause of ribose 5-phosphate isomerase deficiency. The exact function of RPIA remains unknown.
Synonyms:	RPI; RPIAD
Note:	Immunogen sequence homology: Dog: 100%; Pig: 100%; Rat: 100%; Human: 100%; Mouse: 100%; Bovine: 100%; Rabbit: 100%; Guinea pig: 100%



[View online »](#)

Protein Pathways: Metabolic pathways, Pentose phosphate pathway

Product images:



WB Suggested Anti-RPIA Antibody Titration: 0.2-1 ug/ml; ELISA Titer: 1: 62500; Positive Control: 293T cell lysate RPIA is supported by BioGPS gene expression data to be expressed in HEK293T