

Product datasheet for **TA333520**

ANGEL2 Rabbit Polyclonal Antibody

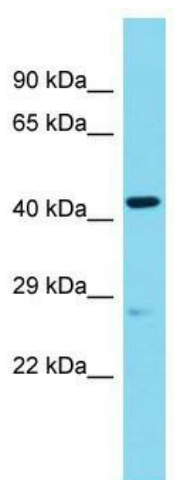
Product data:

Product Type:	Primary Antibodies
Applications:	WB
Recommended Dilution:	WB
Reactivity:	Human
Host:	Rabbit
Isotype:	IgG
Clonality:	Polyclonal
Immunogen:	The immunogen for Anti-ANGEL2 Antibody is: synthetic peptide directed towards the N-terminal region of Human ANGEL2. Synthetic peptide located within the following region: SRTQFQYCNWRPDNLSQTSLIHLSSYVMNAEGDEPSSKRRKHQGVIKRNW
Formulation:	Liquid. Purified antibody supplied in 1x PBS buffer with 0.09% (w/v) sodium azide and 2% sucrose. <i>Note that this product is shipped as lyophilized powder to China customers.</i>
Purification:	Affinity Purified
Conjugation:	Unconjugated
Storage:	Store at -20°C as received.
Stability:	Stable for 12 months from date of receipt.
Predicted Protein Size:	28 kDa
Gene Name:	angel homolog 2 (Drosophila)
Database Link:	NP_653168 Entrez Gene 90806 Human Q5VTE6
Background:	The function of this protein remains unknown.
Synonyms:	Ccr4d; KIAA0759L
Note:	Immunogen sequence homology: Dog: 100%; Pig: 100%; Rat: 100%; Horse: 100%; Human: 100%; Bovine: 100%; Guinea pig: 100%; Mouse: 92%



[View online »](#)

Product images:



Host: Rabbit; Target Name: ANGEL2; Sample Tissue: Placenta lysates; Antibody Dilution: 1.0 ug/ml.