

Product datasheet for **TA333519**

ODAD1 Rabbit Polyclonal Antibody

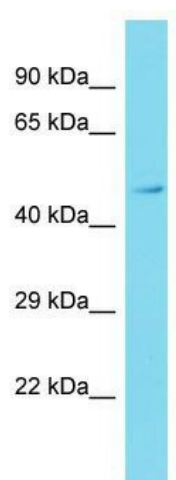
Product data:

Product Type:	Primary Antibodies
Applications:	WB
Recommended Dilution:	WB
Reactivity:	Human
Host:	Rabbit
Isotype:	IgG
Clonality:	Polyclonal
Immunogen:	The immunogen for Anti-CCDC114 Antibody is: synthetic peptide directed towards the C-terminal region of Human CCDC114. Synthetic peptide located within the following region: GSSTVLVPTRHPHAIPGSILSHKTSRDRGSLGHVTFGGLSSSTGHLPSHI
Formulation:	Liquid. Purified antibody supplied in 1x PBS buffer with 0.09% (w/v) sodium azide and 2% sucrose. <i>Note that this product is shipped as lyophilized powder to China customers.</i>
Purification:	Affinity Purified
Conjugation:	Unconjugated
Storage:	Store at -20°C as received.
Stability:	Stable for 12 months from date of receipt.
Predicted Protein Size:	50 kDa
Gene Name:	coiled-coil domain containing 114
Database Link:	NP_653178 Entrez Gene 93233 Human Q96M63
Background:	The function of this protein remains unknown.
Synonyms:	CILD20
Note:	Immunogen sequence homology: Human: 100%; Rat: 83%; Mouse: 83%
Protein Families:	Druggable Genome



[View online »](#)

Product images:



Host: Rabbit; Target Name: CCDC114; Sample
Tissue: HeLa Whole cell lysates; Antibody Dilution:
1.0 ug/ml.