

Product datasheet for **TA333517**

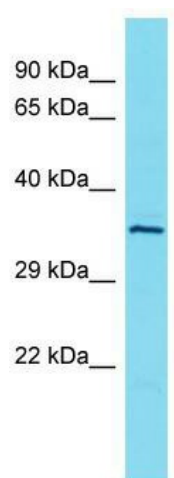
L3HYPDH Rabbit Polyclonal Antibody

Product data:

Product Type:	Primary Antibodies
Applications:	WB
Recommended Dilution:	WB
Reactivity:	Human
Host:	Rabbit
Isotype:	IgG
Clonality:	Polyclonal
Immunogen:	The immunogen for Anti-L3HYPDH Antibody is: synthetic peptide directed towards the C-terminal region of Human L3HYPDH. Synthetic peptide located within the following region: AFKSSATGSVFTGKAVREAKCGDFKAVIVEVSGQAHYTGASFIIEDDDP
Formulation:	Liquid. Purified antibody supplied in 1x PBS buffer with 0.09% (w/v) sodium azide and 2% sucrose. <i>Note that this product is shipped as lyophilized powder to China customers.</i>
Purification:	Affinity Purified
Conjugation:	Unconjugated
Storage:	Store at -20°C as received.
Stability:	Stable for 12 months from date of receipt.
Predicted Protein Size:	38 kDa
Gene Name:	trans-L-3-hydroxyproline dehydratase
Database Link:	NP_653182 Entrez Gene 112849 Human Q96EM0
Background:	L3HYPDH catalyzes the dehydration of trans-3-hydroxy-L-proline to delta-1-pyrroline-2-carboxylate (Pyr2C). It may be required to degrade trans-3-hydroxy-L-proline from the diet and originating from the degradation of proteins such as collagen-IV that contain it.
Synonyms:	C14orf149
Note:	Immunogen sequence homology: Dog: 100%; Horse: 100%; Human: 100%; Bovine: 100%; Pig: 93%; Rat: 93%; Mouse: 93%; Guinea pig: 93%; Rabbit: 86%



[View online »](#)

Product images:

Host: Rabbit; Target Name: L3HYPDH; Sample Tissue: OVCAR-3 Whole Cell lysates; Antibody Dilution: 1.0 ug/ml.