

## Product datasheet for **TA333516**

### SLC22A12 Rabbit Polyclonal Antibody

#### Product data:

Product Type:	Primary Antibodies
Applications:	WB
Recommended Dilution:	WB
Reactivity:	Human
Host:	Rabbit
Isotype:	IgG
Clonality:	Polyclonal
Immunogen:	The immunogen for Anti-SLC22A12 Antibody: synthetic peptide directed towards the N terminal of human SLC22A12. Synthetic peptide located within the following region: SMLNFSAAVPSHRCWAPLLDNSTAQASILGSLSPEALLAISIPPGPNQR
Formulation:	Liquid. Purified antibody supplied in 1x PBS buffer with 0.09% (w/v) sodium azide and 2% sucrose. <i>Note that this product is shipped as lyophilized powder to China customers.</i>
Purification:	Affinity Purified
Conjugation:	Unconjugated
Storage:	Store at -20°C as received.
Stability:	Stable for 12 months from date of receipt.
Predicted Protein Size:	59 kDa
Gene Name:	solute carrier family 22 member 12
Database Link:	<a href="#">NP_653186</a> <a href="#">Entrez Gene 116085 Human</a> <a href="#">Q96S37</a>
Background:	SLC22A12 is required for efficient urate re-absorption in the kidney. SLC22A12 regulates blood urate levels. SLC22A12 mediates saturable urate uptake by facilitating the exchange of urate against organic anions. The protein encoded by this gene is a urate transporter and urate-anion exchanger which regulates the level of urate in the blood. This protein is an integral membrane protein primarily found in kidney. Two transcript variants encoding different isoforms have been found for this gene.



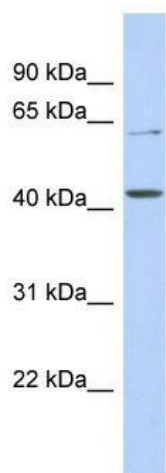
[View online »](#)

Synonyms: OAT4L; RST; URAT1

Note: Immunogen sequence homology: Human: 100%

Protein Families: Transmembrane

### Product images:



WB Suggested Anti-SLC22A12 Antibody Titration:  
0.2-1 ug/ml; ELISA Titer: 1:62500; Positive Control:  
DU145 cell lysate