

## Product datasheet for TA333515

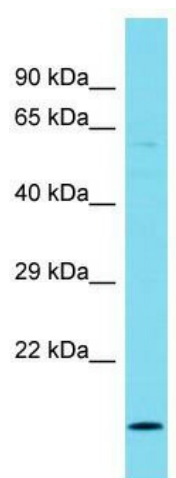
### ANKRD22 Rabbit Polyclonal Antibody

#### Product data:

Product Type:	Primary Antibodies
Applications:	WB
Recommended Dilution:	WB
Reactivity:	Human
Host:	Rabbit
Isotype:	IgG
Clonality:	Polyclonal
Immunogen:	The immunogen for Anti-ANKRD22 Antibody is: synthetic peptide directed towards the N-terminal region of Human ANKRD22. Synthetic peptide located within the following region: CRRGHVRIVSFLRRNANVNLKNQKERTCLHYAVKKKFTFIDYLLILLM
Formulation:	Liquid. Purified antibody supplied in 1x PBS buffer with 0.09% (w/v) sodium azide and 2% sucrose. <i>Note that this product is shipped as lyophilized powder to China customers.</i>
Purification:	Affinity Purified
Conjugation:	Unconjugated
Storage:	Store at -20°C as received.
Stability:	Stable for 12 months from date of receipt.
Predicted Protein Size:	21 kDa
Gene Name:	ankyrin repeat domain 22
Database Link:	<a href="#">NP_653191</a> <a href="#">Entrez Gene 118932 Human</a> <a href="#">Q5VYY1</a>
Background:	The function of this protein remains unknown.
Synonyms:	MGC22805
Note:	Immunogen sequence homology: Pig: 100%; Horse: 100%; Human: 100%; Rabbit: 100%; Rat: 93%; Mouse: 93%; Bovine: 93%; Guinea pig: 93%; Zebrafish: 82%; Dog: 79%
Protein Families:	Transmembrane



[View online »](#)

**Product images:**

Host: Rabbit; Target Name: ANKRD22; Sample Tissue: Fetal Brain lysates; Antibody Dilution: 1.0 ug/ml.