

Product datasheet for **TA333514**

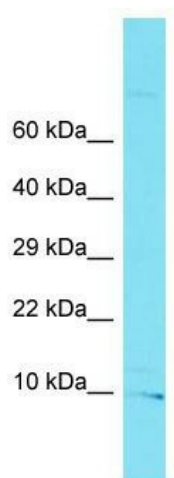
C10orf32 (BORCS7) Rabbit Polyclonal Antibody

Product data:

Product Type:	Primary Antibodies
Applications:	WB
Recommended Dilution:	WB
Reactivity:	Human
Host:	Rabbit
Isotype:	IgG
Clonality:	Polyclonal
Immunogen:	The immunogen for Anti-C10orf32 Antibody is: synthetic peptide directed towards the C-terminal region of Human C10orf32. Synthetic peptide located within the following region: RNMVLQEDAILHSEDSLKMAITTHLQYQQEAIQKNVEQSSDLQDQLNH
Formulation:	Liquid. Purified antibody supplied in 1x PBS buffer with 0.09% (w/v) sodium azide and 2% sucrose. <i>Note that this product is shipped as lyophilized powder to China customers.</i>
Purification:	Affinity Purified
Conjugation:	Unconjugated
Storage:	Store at -20°C as received.
Stability:	Stable for 12 months from date of receipt.
Predicted Protein Size:	11 kDa
Gene Name:	BLOC-1 related complex subunit 7
Database Link:	NP_653192 Entrez Gene 119032 Human Q96B45
Background:	The function of this protein remains unknown.
Synonyms:	RP11-753C18.6
Note:	Immunogen sequence homology: Dog: 100%; Pig: 100%; Rat: 100%; Horse: 100%; Human: 100%; Mouse: 100%; Bovine: 100%; Rabbit: 100%; Zebrafish: 100%; Guinea pig: 100%



[View online »](#)

Product images:

Host: Rabbit; Target Name: C10orf32; Sample
Tissue: U937 Whole Cell lysates; Antibody
Dilution: 1.0 ug/ml.