

Product datasheet for **TA333512**

C11orf40 Rabbit Polyclonal Antibody

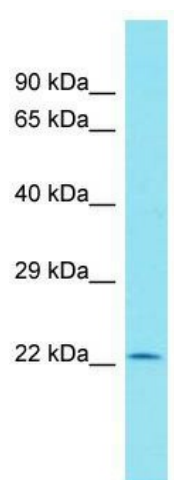
Product data:

| | |
|-------------------------|--|
| Product Type: | Primary Antibodies |
| Applications: | WB |
| Recommended Dilution: | WB |
| Reactivity: | Human |
| Host: | Rabbit |
| Isotype: | IgG |
| Clonality: | Polyclonal |
| Immunogen: | The immunogen for Anti-C11orf40 Antibody is: synthetic peptide directed towards the N-terminal region of Human C11orf40. Synthetic peptide located within the following region: VPREREPKLSILQMDRGDPQHSSHWCPEREKVKLLTLKPRETSKNILINF |
| Formulation: | Liquid. Purified antibody supplied in 1x PBS buffer with 0.09% (w/v) sodium azide and 2% sucrose. |
| Purification: | Affinity Purified |
| Conjugation: | Unconjugated |
| Storage: | Store at -20°C as received. |
| Stability: | Stable for 12 months from date of receipt. |
| Predicted Protein Size: | 24 kDa |
| Gene Name: | chromosome 11 open reading frame 40 |
| Database Link: | NP_653264 Entrez Gene 143501 Human |
| Background: | The function of this protein remains unknown. |
| Synonyms: | NOV1 |
| Note: | Immunogen sequence homology: Human: 100% |



[View online »](#)

Product images:



Host: Rabbit; Target Name: C11orf40; Sample
Tissue: HeLa Whole cell lysates; Antibody Dilution:
1.0 ug/ml.