

Product datasheet for **TA333509**

SLC23A3 Rabbit Polyclonal Antibody

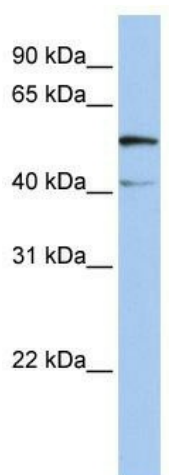
Product data:

Product Type:	Primary Antibodies
Applications:	WB
Recommended Dilution:	WB
Reactivity:	Human
Host:	Rabbit
Isotype:	IgG
Clonality:	Polyclonal
Immunogen:	The immunogen for Anti-SLC23A3 Antibody: synthetic peptide directed towards the N terminal of human SLC23A3. Synthetic peptide located within the following region: SRSPLNPSQLRSVGSQDALAPLPPPAPQNPSTHSWDPLCGSLPWGLSCLL
Formulation:	Liquid. Purified antibody supplied in 1x PBS buffer with 0.09% (w/v) sodium azide and 2% sucrose. <i>Note that this product is shipped as lyophilized powder to China customers.</i>
Purification:	Affinity Purified
Conjugation:	Unconjugated
Storage:	Store at -20°C as received.
Stability:	Stable for 12 months from date of receipt.
Predicted Protein Size:	52 kDa
Gene Name:	solute carrier family 23 member 3
Database Link:	NP_653313 Entrez Gene 151295 Human Q6PIS1
Background:	SLC23A3 is a multi-pass membrane protein. It belongs to the xanthine/uracil permease family, SLC23A subfamily. The exact function of SLC23A3 remains unknown.
Synonyms:	E2BP3; SVCT3; Yspl1
Note:	Immunogen sequence homology: Human: 100%
Protein Families:	Transmembrane



[View online »](#)

Product images:



WB Suggested Anti-SLC23A3 Antibody Titration:
0.2-1 ug/ml; Positive Control: Human Placenta