

Product datasheet for TA333508

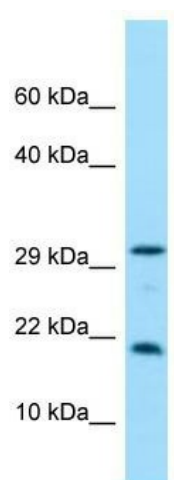
CRYGN Rabbit Polyclonal Antibody

Product data:

Product Type:	Primary Antibodies
Applications:	WB
Recommended Dilution:	WB
Reactivity:	Human
Host:	Rabbit
Isotype:	IgG
Clonality:	Polyclonal
Immunogen:	The immunogen for Anti-CRYGN Antibody is: synthetic peptide directed towards the C-terminal region of Human CRYGN. Synthetic peptide located within the following region: SRGWVKNCVNTIKVYGDGAAWSPRSFGAEDFQLSSSLQSDQGPEEATTKP
Formulation:	Liquid. Purified antibody supplied in 1x PBS buffer with 0.09% (w/v) sodium azide and 2% sucrose.
Purification:	Affinity Purified
Conjugation:	Unconjugated
Storage:	Store at -20°C as received.
Stability:	Stable for 12 months from date of receipt.
Predicted Protein Size:	20 kDa
Gene Name:	crystallin gamma N
Database Link:	NP_653328 Entrez Gene 155051 Human Q8WXF5
Background:	The beta and gamma crystallins are evolutionarily related families of proteins that are localized to the refractive structure of the eye lens. The protein encoded by this gene is unique in that it has both beta and gamma crystallin protein motifs.
Synonyms:	MGC119042; MGC119043; MGC119044; MGC119045
Note:	Immunogen sequence homology: Human: 100%


[View online »](#)

Product images:



WB Suggested Anti-CRYGN Antibody; Titration:
1.0 ug/ml; Positive Control: Hela Whole cell