

## Product datasheet for **TA333507**

### SUSD3 Rabbit Polyclonal Antibody

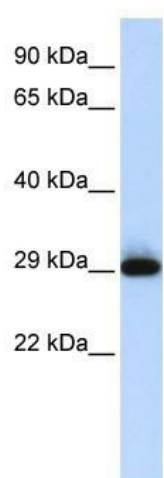
#### Product data:

Product Type:	Primary Antibodies
Applications:	WB
Recommended Dilution:	WB
Reactivity:	Human
Host:	Rabbit
Isotype:	IgG
Clonality:	Polyclonal
Immunogen:	The immunogen for Anti-SUSD3 Antibody: synthetic peptide directed towards the N terminal of human SUSD3. Synthetic peptide located within the following region: LRLPPQATFQVLRGNGASVGTVLMFRCPSNHQMVGSGLLTCTWKGSIAEW
Formulation:	Liquid. Purified antibody supplied in 1x PBS buffer with 0.09% (w/v) sodium azide and 2% sucrose. <i>Note that this product is shipped as lyophilized powder to China customers.</i>
Purification:	Affinity Purified
Conjugation:	Unconjugated
Storage:	Store at -20°C as received.
Stability:	Stable for 12 months from date of receipt.
Predicted Protein Size:	27 kDa
Gene Name:	sushi domain containing 3
Database Link:	<a href="#">NP_659443</a> <a href="#">Entrez Gene 203328 Human</a> <a href="#">Q96L08</a>
Background:	The exact function of SUSD3 remains unknown.
Synonyms:	MGC26847
Note:	Immunogen sequence homology: Human: 100%; Pig: 77%; Bovine: 77%
Protein Families:	Transmembrane



[View online »](#)

## Product images:



WB Suggested Anti-SUSD3 Antibody Titration: 0.2-1 ug/ml; ELISA Titer: 1: 12500; Positive Control: Human Placenta