

Product datasheet for **TA333506**

HYLS1 Rabbit Polyclonal Antibody

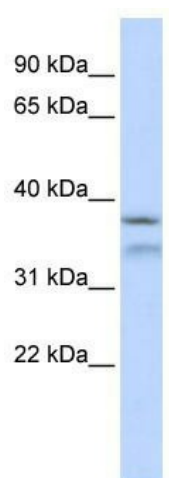
Product data:

Product Type:	Primary Antibodies
Applications:	WB
Recommended Dilution:	WB
Reactivity:	Human
Host:	Rabbit
Isotype:	IgG
Clonality:	Polyclonal
Immunogen:	The immunogen for Anti-HYLS1 Antibody: synthetic peptide directed towards the middle region of human HYLS1. Synthetic peptide located within the following region: YFEYKRDWDSIRLPGEDHRKELRWGVREQMLCRAEPQSKPQHIVPNNYL
Formulation:	Liquid. Purified antibody supplied in 1x PBS buffer with 0.09% (w/v) sodium azide and 2% sucrose. <i>Note that this product is shipped as lyophilized powder to China customers.</i>
Purification:	Affinity Purified
Conjugation:	Unconjugated
Storage:	Store at -20°C as received.
Stability:	Stable for 12 months from date of receipt.
Predicted Protein Size:	34 kDa
Gene Name:	HYLS1, centriolar and ciliogenesis associated
Database Link:	NP_659451 Entrez Gene 219844 Human Q96M11
Background:	This protein is a protein localized to the cytoplasm. Mutations in this protein are associated with hydrolethalus syndrome.
Synonyms:	HLS
Note:	Immunogen sequence homology: Human: 100%; Dog: 93%; Bovine: 93%; Pig: 92%; Rat: 92%; Guinea pig: 92%; Horse: 86%; Mouse: 86%; Rabbit: 86%



[View online »](#)

Product images:



WB Suggested Anti-HYLS1 Antibody Titration: 0.2-1 ug/ml; ELISA Titer: 1: 62500; Positive Control: 293T cell lysate