

## Product datasheet for **TA333501**

### SKA3 Rabbit Polyclonal Antibody

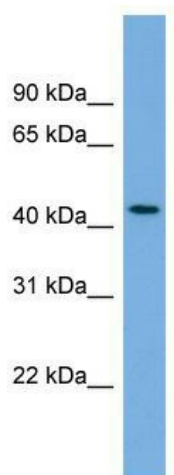
#### Product data:

Product Type:	Primary Antibodies
Applications:	WB
Recommended Dilution:	WB
Reactivity:	Human
Host:	Rabbit
Isotype:	IgG
Clonality:	Polyclonal
Immunogen:	The immunogen for Anti-SKA3 Antibody: synthetic peptide directed towards the middle region of human SKA3. Synthetic peptide located within the following region: EVEDRTSLVLNSDTCFENLTDPSSTISSYENLLRTPPTPEVTKIPEDIL
Formulation:	Liquid. Purified antibody supplied in 1x PBS buffer with 0.09% (w/v) sodium azide and 2% sucrose. <i>Note that this product is shipped as lyophilized powder to China customers.</i>
Purification:	Affinity Purified
Conjugation:	Unconjugated
Storage:	Store at -20°C as received.
Stability:	Stable for 12 months from date of receipt.
Predicted Protein Size:	46 kDa
Gene Name:	spindle and kinetochore associated complex subunit 3
Database Link:	<a href="#">NP_659498</a> <a href="#">Entrez Gene 221150 Human</a> <a href="#">Q8IX90</a>
Background:	The function of this protein remains unknown.
Synonyms:	C13orf3; RAMA1
Note:	Immunogen sequence homology: Dog: 100%; Pig: 100%; Horse: 100%; Human: 100%; Rabbit: 100%; Guinea pig: 100%; Bovine: 93%; Rat: 86%



[View online »](#)

## Product images:



WB Suggested Anti-SKA3 Antibody Titration: 0.2-1 ug/ml; ELISA Titer: 1: 1562500; Positive Control: ACHN cell lysate