

## Product datasheet for **TA333500**

### GLUT12 (SLC2A12) Rabbit Polyclonal Antibody

#### Product data:

Product Type:	Primary Antibodies
Applications:	WB
Recommended Dilution:	WB
Reactivity:	Human
Host:	Rabbit
Isotype:	IgG
Clonality:	Polyclonal
Immunogen:	The immunogen for Anti-SLC2A12 Antibody: synthetic peptide directed towards the middle region of human SLC2A12. Synthetic peptide located within the following region: FFVQITGQPNIIFYASTVLKSVGFQSNEAASLASTGVGVVKIVISTIPATL
Formulation:	Liquid. Purified antibody supplied in 1x PBS buffer with 0.09% (w/v) sodium azide and 2% sucrose. <i>Note that this product is shipped as lyophilized powder to China customers.</i>
Purification:	Affinity Purified
Conjugation:	Unconjugated
Storage:	Store at -20°C as received.
Stability:	Stable for 12 months from date of receipt.
Predicted Protein Size:	67 kDa
Gene Name:	solute carrier family 2 member 12
Database Link:	<a href="#">NP_660159</a> <a href="#">Entrez Gene 154091 Human</a> <a href="#">Q8TD20</a>
Background:	SLC2A12 belongs to a family of transporters that catalyze the uptake of sugars through facilitated diffusion (Rogers et al., 2002). This family of transporters show conservation of 12 transmembrane helices as well as functionally significant amino acid residues (Joost and Thorens, 2001 [PubMed 11780753]).
Synonyms:	GLUT8; GLUT12

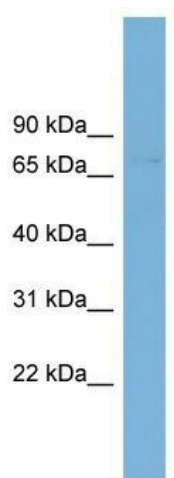


[View online »](#)

**Note:** Immunogen sequence homology: Dog: 100%; Pig: 100%; Rat: 100%; Goat: 100%; Horse: 100%; Human: 100%; Mouse: 100%; Bovine: 100%; Rabbit: 100%; Guinea pig: 93%; Zebrafish: 79%

**Protein Families:** Transmembrane

**Product images:**



WB Suggested Anti-SLC2A12 Antibody Titration:  
0.2-1 ug/ml; Positive Control: PANC1 cell lysate