

Product datasheet for **TA333499**

ZNF31 (ZSCAN20) Rabbit Polyclonal Antibody

Product data:

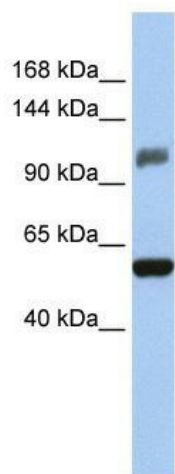
Product Type:	Primary Antibodies
Applications:	WB
Recommended Dilution:	WB
Reactivity:	Human
Host:	Rabbit
Isotype:	IgG
Clonality:	Polyclonal
Immunogen:	The immunogen for Anti-ZSCAN20 Antibody: synthetic peptide directed towards the middle region of human ZSCAN20. Synthetic peptide located within the following region: QESSSEEDLEKLIDHQGLYLAEKPYKCDTCMKSFSSHFIAHQRIHTGE
Formulation:	Liquid. Purified antibody supplied in 1x PBS buffer with 0.09% (w/v) sodium azide and 2% sucrose.
Purification:	Affinity Purified
Conjugation:	Unconjugated
Storage:	Store at -20°C as received.
Stability:	Stable for 12 months from date of receipt.
Predicted Protein Size:	117 kDa
Gene Name:	zinc finger and SCAN domain containing 20
Database Link:	NP_660281 Entrez Gene 7579 Human P17040
Background:	ZSCAN20 belongs to the krueppel C2H2-type zinc-finger protein family. It contains 10 C2H2-type zinc fingers and 1 SCAN box domain. ZSCAN20 may be involved in transcriptional regulation.
Synonyms:	KOX29; ZFP-31; ZNF31; ZNF360
Note:	Immunogen sequence homology: Dog: 100%; Rat: 100%; Horse: 100%; Human: 100%; Mouse: 100%; Bovine: 100%; Rabbit: 100%; Pig: 93%



[View online »](#)

Protein Families: Transcription Factors

Product images:



WB Suggested Anti-ZSCAN20 Antibody Titration:
0.2-1 ug/ml; Positive Control: HeLa cell lysate