

Product datasheet for **TA333497**

SLC15A4 Rabbit Polyclonal Antibody

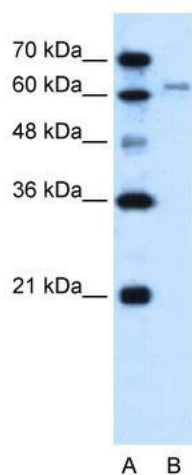
Product data:

Product Type:	Primary Antibodies
Applications:	IHC, WB
Recommended Dilution:	WB, IHC
Reactivity:	Human
Host:	Rabbit
Isotype:	IgG
Clonality:	Polyclonal
Immunogen:	The immunogen for Anti-SLC15A4 Antibody: synthetic peptide directed towards the N terminal of human SLC15A4. Synthetic peptide located within the following region: MEGSGGGAGERAPLLGARRAAAAAAGAFAGRRAACGAVLLTELLERAA
Formulation:	Liquid. Purified antibody supplied in 1x PBS buffer with 0.09% (w/v) sodium azide and 2% sucrose. <i>Note that this product is shipped as lyophilized powder to China customers.</i>
Purification:	Affinity Purified
Conjugation:	Unconjugated
Storage:	Store at -20°C as received.
Stability:	Stable for 12 months from date of receipt.
Predicted Protein Size:	62 kDa
Gene Name:	solute carrier family 15 member 4
Database Link:	NP_663623 Entrez Gene 121260 Human Q8N697
Background:	The function remains known.
Synonyms:	FP12591; PHT1; PTR4
Note:	Immunogen sequence homology: Human: 100%

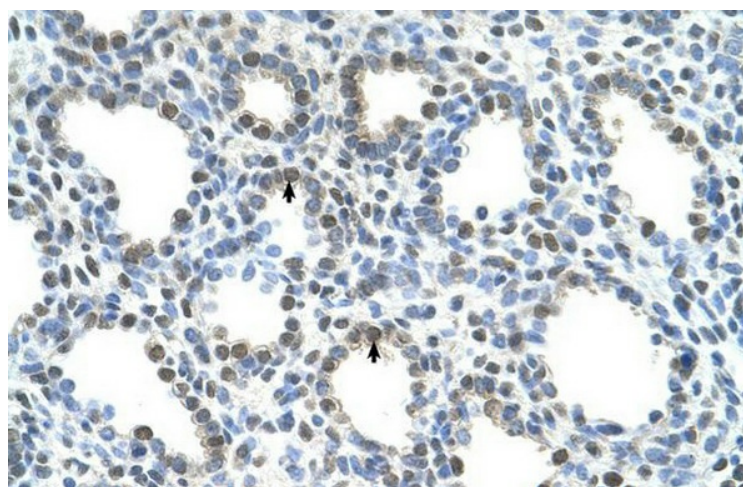


[View online »](#)

Product images:



WB Suggested Anti-SLC15A4 Antibody Titration: 0.25 ug/ml; Positive Control: HepG2 cell lysate



Human Lung