

Product datasheet for **TA333496**

ZNF23 Rabbit Polyclonal Antibody

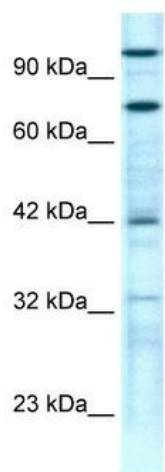
Product data:

Product Type:	Primary Antibodies
Applications:	WB
Recommended Dilution:	WB
Reactivity:	Human
Host:	Rabbit
Isotype:	IgG
Clonality:	Polyclonal
Immunogen:	The immunogen for Anti-ZNF23 Antibody: synthetic peptide directed towards the N terminal of human ZNF23. Synthetic peptide located within the following region: MLENYGNVASLGFPLLKPAVISQLEGGSELGGSSPLAAGTGLQLQTDIQ
Formulation:	Liquid. Purified antibody supplied in 1x PBS buffer with 0.09% (w/v) sodium azide and 2% sucrose.
Purification:	Affinity Purified
Conjugation:	Unconjugated
Storage:	Store at -20°C as received.
Stability:	Stable for 12 months from date of receipt.
Predicted Protein Size:	73 kDa
Gene Name:	zinc finger protein 23
Database Link:	NP_666016 Entrez Gene 7571 Human P17027
Background:	ZNF23 (GZF1) has a BTB/POZ (broad complex, tramtrack, and bric-a-brac)/(poxvirus and zinc finger) domain and 10 tandemly repeated zinc finger motifs with strong transcriptional repressive activity.
Synonyms:	KOX16; Zfp612; ZNF359; ZNF612
Note:	Immunogen sequence homology: Human: 100%; Dog: 86%; Rat: 86%; Mouse: 86%; Pig: 79%; Horse: 79%; Bovine: 79%; Guinea pig: 79%


[View online »](#)

Protein Families: Transcription Factors

Product images:



WB Suggested Anti-ZNF23 Antibody Titration: 0.2-1 ug/ml; Positive Control: Jurkat cell lysate