

## Product datasheet for **TA333495**

### SLC5A8 Rabbit Polyclonal Antibody

#### Product data:

Product Type:	Primary Antibodies
Applications:	WB
Recommended Dilution:	WB
Reactivity:	Human
Host:	Rabbit
Isotype:	IgG
Clonality:	Polyclonal
Immunogen:	The immunogen for Anti-SLC5A8 Antibody: synthetic peptide directed towards the middle region of human SLC5A8. Synthetic peptide located within the following region: GILVPFANSIGALVGLMAGFAISLWVGIGAQIYPPLPERTLPLHLDIQGC
Formulation:	Liquid. Purified antibody supplied in 1x PBS buffer with 0.09% (w/v) sodium azide and 2% sucrose. <i>Note that this product is shipped as lyophilized powder to China customers.</i>
Purification:	Affinity Purified
Conjugation:	Unconjugated
Storage:	Store at -20°C as received.
Stability:	Stable for 12 months from date of receipt.
Predicted Protein Size:	66 kDa
Gene Name:	solute carrier family 5 member 8
Database Link:	<a href="#">NP_666018</a> <a href="#">Entrez Gene 160728 Human</a> <a href="#">Q8N695</a>



[View online »](#)

**Background:**

SLC5A8 has been shown to transport iodide by a passive mechanism (Rodriguez et al., 2002 [PubMed 12107270]) and monocarboxylates and short-chain fatty acids by a sodium-coupled mechanism (Gopal et al., 2004 [PubMed 15322102]). In kidney, SLC5A8 functions as a high-affinity sodium-coupled lactate transporter involved in reabsorption of lactate and maintenance of blood lactate levels (Thangaraju et al., 2006 [PubMed 16873376]). [supplied by OMIM, Dec 2008]. Sequence Note: This RefSeq record was created from transcript and genomic sequence data because transcript sequence consistent with the reference genome assembly was not available for all regions of the RefSeq transcript. The extent of this transcript is supported by transcript alignments. Publication Note: This RefSeq record includes a subset of the publications that are available for this gene. Please see the Gene record to access additional publications. ##Evidence-Data-START## Transcript exon combination :: AF536216.1, AY081220.1 [ECO:0000332] RNAseq introns :: mixed/partial sample support ERS025081, ERS025083 [ECO:0000350] ##Evidence-Data-END##

**Synonyms:**

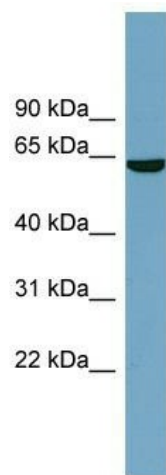
AIT; SMCT; SMCT1

**Note:**

Immunogen sequence homology: Human: 100%; Rabbit: 92%; Rat: 91%; Mouse: 83%

**Protein Families:**

Transmembrane

**Product images:**


WB Suggested Anti-SLC5A8 Antibody Titration:  
0.2-1 ug/ml; Positive Control: OVCAR-3 cell lysate