

Product datasheet for **TA333494**

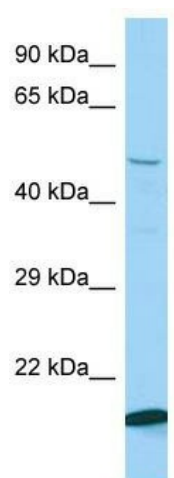
Kbtbd2 Rabbit Polyclonal Antibody

Product data:

Product Type:	Primary Antibodies
Applications:	WB
Recommended Dilution:	WB
Reactivity:	Mouse
Host:	Rabbit
Isotype:	IgG
Clonality:	Polyclonal
Immunogen:	The immunogen for Anti-Kbtbd2 Antibody is: synthetic peptide directed towards the N-terminal region of Mouse Kbtbd2. Synthetic peptide located within the following region: SSDNLNVEKEETVREAAMLWLEYNTESRSQYLSSVLSQIRIDALSEVTQR
Formulation:	Liquid. Purified antibody supplied in 1x PBS buffer with 0.09% (w/v) sodium azide and 2% sucrose.
Purification:	Affinity Purified
Conjugation:	Unconjugated
Storage:	Store at -20°C as received.
Stability:	Stable for 12 months from date of receipt.
Predicted Protein Size:	52 kDa
Gene Name:	kelch repeat and BTB (POZ) domain containing 2
Database Link:	NP_666070 Entrez Gene 210973 Mouse
Background:	The function of this protein remains unknown.
Synonyms:	BKLHD1; DKFZP566C134; KIAA1489
Note:	Immunogen sequence homology: Dog: 100%; Pig: 100%; Rat: 100%; Horse: 100%; Human: 100%; Mouse: 100%; Bovine: 100%; Rabbit: 100%; Guinea pig: 100%; Zebrafish: 86%



[View online »](#)

Product images:

Host: Rabbit; Target Name: Kbtbd2; Sample
Tissue: Mouse Testis lysates; Antibody Dilution:
1.0 ug/ml