

## Product datasheet for **TA333493**

### Olfr110 Rabbit Polyclonal Antibody

#### Product data:

Product Type:	Primary Antibodies
Applications:	WB
Recommended Dilution:	WB
Reactivity:	Mouse
Host:	Rabbit
Isotype:	IgG
Clonality:	Polyclonal
Immunogen:	The immunogen for Anti-Olfr110 Antibody is: synthetic peptide directed towards the C-terminal region of Mouse Olfr110. Synthetic peptide located within the following region: RPISSYSLEKDRLLISVLYSVTPMLNPNVIYTLRKNKDIKEAVKAIGRKWQP
Formulation:	Liquid. Purified antibody supplied in 1x PBS buffer with 0.09% (w/v) sodium azide and 2% sucrose. <i>Note that this product is shipped as lyophilized powder to China customers.</i>
Purification:	Affinity Purified
Conjugation:	Unconjugated
Storage:	Store at -20°C as received.
Stability:	Stable for 12 months from date of receipt.
Predicted Protein Size:	35 kDa
Gene Name:	olfactory receptor 110
Database Link:	<a href="#">NP_666440</a> <a href="#">Entrez Gene 258325 Mouse</a>



[View online »](#)

**Background:**

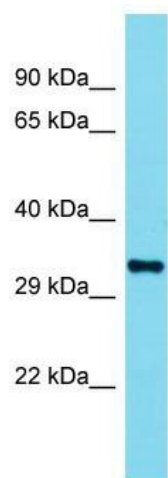
Olfactory receptors interact with odorant molecules in the nose, to initiate a neuronal response that triggers the perception of a smell. The olfactory receptor proteins are members of a large family of G-protein-coupled receptors (GPCR) arising from single coding-exon genes. Olfactory receptors share a 7-transmembrane domain structure with many neurotransmitter and hormone receptors and are responsible for the recognition and G protein-mediated transduction of odorant signals. The olfactory receptor gene family is the largest in the genome. The nomenclature assigned to the olfactory receptor genes and proteins for this organism is independent of other organisms.

**Synonyms:**

MOR249-2

**Note:**

Immunogen sequence homology: Dog: 100%; Human: 100%; Rat: 92%; Mouse: 92%; Pig: 90%; Horse: 90%; Bovine: 90%; Rabbit: 90%; Guinea pig: 75%

**Product images:**

Host: Rabbit; Target Name: Olfr110; Sample Tissue: Mouse Spleen lysates; Antibody Dilution: 1.0 ug/ml.