

## Product datasheet for TA333491

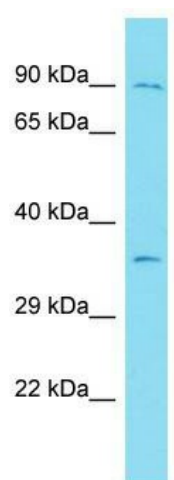
### Tpgs1 Rabbit Polyclonal Antibody

#### Product data:

Product Type:	Primary Antibodies
Applications:	WB
Recommended Dilution:	WB
Reactivity:	Mouse
Host:	Rabbit
Isotype:	IgG
Clonality:	Polyclonal
Immunogen:	The immunogen for Anti-Tpgs1 Antibody is: synthetic peptide directed towards the middle region of Mouse Tpgs1. Synthetic peptide located within the following region: DGRTYSELLKRVCRDGGAPEEVAPLLRKIQCRDHEAVPLGIFRTGMLSC
Formulation:	Liquid. Purified antibody supplied in 1x PBS buffer with 0.09% (w/v) sodium azide and 2% sucrose.
Purification:	Affinity Purified
Conjugation:	Unconjugated
Storage:	Store at -20°C as received.
Stability:	Stable for 12 months from date of receipt.
Predicted Protein Size:	32 kDa
Gene Name:	tubulin polyglutamylase complex subunit 1
Database Link:	<a href="#">NP_683736</a> <a href="#">Entrez Gene 110012 Mouse</a> <a href="#">Q99MS8</a>
Background:	Tpgs1 may act in the targeting of the tubulin polyglutamylase complex. It is required for the development of the spermatid flagellum.
Synonyms:	AV005629; Gm16517; Gtrgeo22; PGs1
Note:	Immunogen sequence homology: Human: 100%; Dog: 92%; Pig: 92%; Rat: 92%; Mouse: 92%; Bovine: 92%; Guinea pig: 92%; Rabbit: 77%


[View online »](#)

## Product images:



Host: Rabbit; Target Name: Tpgs1; Sample Tissue: Mouse Heart lysates; Antibody Dilution: 1.0 ug/ml.