

## Product datasheet for **TA333489**

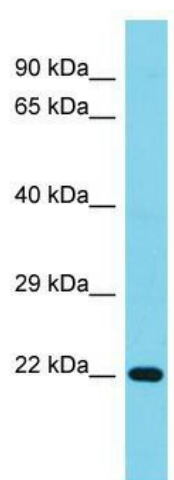
### C1orf158 Rabbit Polyclonal Antibody

#### Product data:

Product Type:	Primary Antibodies
Applications:	WB
Recommended Dilution:	WB
Reactivity:	Human
Host:	Rabbit
Isotype:	IgG
Clonality:	Polyclonal
Immunogen:	The immunogen for Anti-C1orf158 Antibody is: synthetic peptide directed towards the N-terminal region of Human C1orf158. Synthetic peptide located within the following region: KVLGTGNWMEERRKFTRDTDKTPQSIYRKEYIPFPDHRPDQISRWYGKRKV
Formulation:	Liquid. Purified antibody supplied in 1x PBS buffer with 0.09% (w/v) sodium azide and 2% sucrose. <i>Note that this product is shipped as lyophilized powder to China customers.</i>
Purification:	Affinity Purified
Conjugation:	Unconjugated
Storage:	Store at -20°C as received.
Stability:	Stable for 12 months from date of receipt.
Predicted Protein Size:	22 kDa
Gene Name:	chromosome 1 open reading frame 158
Database Link:	<a href="#">NP_689503</a> <a href="#">Entrez Gene 93190 Human</a> <a href="#">Q8N1D5</a>
Background:	The function of this protein remains unknown.
Synonyms:	RP11-474O21.4
Note:	Immunogen sequence homology: Dog: 100%; Pig: 100%; Human: 100%; Guinea pig: 100%; Bovine: 82%; Rat: 77%; Rabbit: 77%



[View online »](#)

**Product images:**

Host: Rabbit; Target Name: C1orf158; Sample  
Tissue: Jurkat Whole Cell lysates; Antibody  
Dilution: 1.0 ug/ml.