

Product datasheet for **TA333488**

SLC36A4 Rabbit Polyclonal Antibody

Product data:

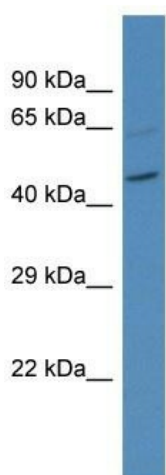
Product Type:	Primary Antibodies
Applications:	WB
Recommended Dilution:	WB
Reactivity:	Mouse
Host:	Rabbit
Isotype:	IgG
Clonality:	Polyclonal
Immunogen:	The immunogen for Anti-Slc36a4 Antibody is: synthetic peptide directed towards the N-terminal region of MOUSE Slc36a4. Synthetic peptide located within the following region: RPLINEQNFQDSSDEEQQLVPIQKHYQLDQGQHGISFLQTLVHLLKGNL
Formulation:	Liquid. Purified antibody supplied in 1x PBS buffer with 0.09% (w/v) sodium azide and 2% sucrose. <i>Note that this product is shipped as lyophilized powder to China customers.</i>
Purification:	Affinity Purified
Conjugation:	Unconjugated
Storage:	Store at -20°C as received.
Stability:	Stable for 12 months from date of receipt.
Predicted Protein Size:	55 kDa
Gene Name:	solute carrier family 36 member 4
Database Link:	NP_689526 Entrez Gene 234967 Mouse Q6YBV0
Background:	Slc36a4 functions as a sodium-independent electroneutral transporter for tryptophan, proline and alanine.
Synonyms:	PAT4
Note:	Immunogen sequence homology: Dog: 100%; Pig: 100%; Horse: 100%; Human: 100%; Rabbit: 100%; Rat: 93%; Bovine: 93%; Mouse: 86%



[View online »](#)

Protein Families: Transmembrane

Product images:



Host: Rabbit

Target Name: Slc36a4

Sample Tissue: Mouse Pancreas Lysate

Antibody Dilution: 1.0 μ g/ml

Host: Rabbit; Target Name: Slc36a4; Sample Tissue: Mouse Pancreas lysates; Antibody Dilution: 1.0 ug/ml