

Product datasheet for TA333487

SLC43A2 Rabbit Polyclonal Antibody

Product data:

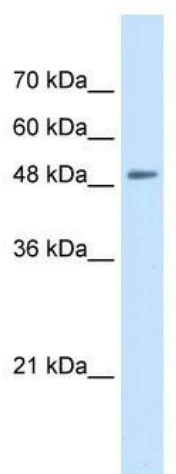
Product Type:	Primary Antibodies
Applications:	WB
Recommended Dilution:	WB
Reactivity:	Human
Host:	Rabbit
Isotype:	IgG
Clonality:	Polyclonal
Immunogen:	The immunogen for Anti-SLC43A2 Antibody: synthetic peptide directed towards the N terminal of human SLC43A2. Synthetic peptide located within the following region: TEPENVTNGTVGGTAEPGHEEVSWMNGWLSCQAQDEMLNLAFTVGSFLLS
Formulation:	Liquid. Purified antibody supplied in 1x PBS buffer with 0.09% (w/v) sodium azide and 2% sucrose. <i>Note that this product is shipped as lyophilized powder to China customers.</i>
Purification:	Affinity Purified
Conjugation:	Unconjugated
Storage:	Store at -20°C as received.
Stability:	Stable for 12 months from date of receipt.
Predicted Protein Size:	53 kDa
Gene Name:	solute carrier family 43 member 2
Database Link:	NP_689559 Entrez Gene 124935 Human Q8N370
Background:	SLC43A2 is a Sodium-, chloride, pH-independent high affinity transport of large neutral amino acids.
Synonyms:	LAT4
Note:	Immunogen sequence homology: Human: 100%; Dog: 93%; Pig: 86%; Rat: 86%; Horse: 85%; Bovine: 79%



[View online »](#)

Protein Families: Transmembrane

Product images:



WB Suggested Anti-SLC43A2 Antibody Titration:
0.2-1 ug/ml; Positive Control: Jurkat cell lysate