

Product datasheet for **TA333484**

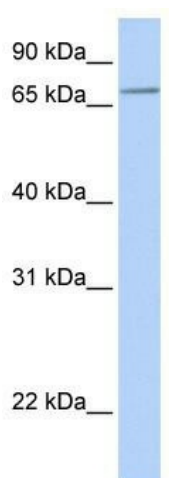
SLC44A3 Rabbit Polyclonal Antibody

Product data:

Product Type:	Primary Antibodies
Applications:	WB
Recommended Dilution:	WB
Reactivity:	Human
Host:	Rabbit
Isotype:	IgG
Clonality:	Polyclonal
Immunogen:	The immunogen for Anti-SLC44A3 Antibody: synthetic peptide directed towards the N terminal of human SLC44A3. Synthetic peptide located within the following region: MGYSVWAGAAGRLLFGYDSFGNMCGKKNSPVEGAPLSGQDMTLKKHVFFM
Formulation:	Liquid. Purified antibody supplied in 1x PBS buffer with 0.09% (w/v) sodium azide and 2% sucrose.
Purification:	Affinity Purified
Conjugation:	Unconjugated
Storage:	Store at -20°C as received.
Stability:	Stable for 12 months from date of receipt.
Predicted Protein Size:	68 kDa
Gene Name:	solute carrier family 44 member 3
Database Link:	NP_689582 Entrez Gene 126969 Human Q8N4M1
Background:	SLC44A3 is a multi-pass membrane protein. It belongs to the CTL (choline transporter-like) family. The function of the RBM34 protein remains unknown.
Synonyms:	CTL3
Note:	Immunogen sequence homology: Dog: 100%; Pig: 100%; Rat: 100%; Horse: 100%; Human: 100%; Mouse: 100%; Bovine: 100%; Rabbit: 100%; Guinea pig: 100%
Protein Families:	Transmembrane



[View online »](#)

Product images:

WB Suggested Anti-SLC44A3 Antibody Titration:
0.2-1 ug/ml; ELISA Titer: 1:1562500; Positive
Control: Hela cell lysate