

Product datasheet for **TA333481**

LINGO2 Rabbit Polyclonal Antibody

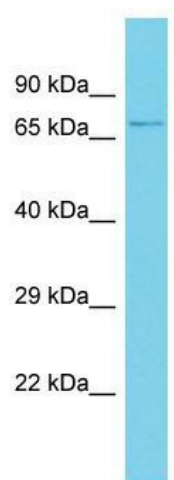
Product data:

Product Type:	Primary Antibodies
Applications:	WB
Recommended Dilution:	WB
Reactivity:	Human
Host:	Rabbit
Isotype:	IgG
Clonality:	Polyclonal
Immunogen:	The immunogen for Anti-LINGO2 Antibody is: synthetic peptide directed towards the N-terminal region of Human LINGO2. Synthetic peptide located within the following region: ILDLSKNRLKSVNPEEFISYPLLEEIDLSDNIIANVEPGAFFNNLFLNRLSL
Formulation:	Liquid. Purified antibody supplied in 1x PBS buffer with 0.09% (w/v) sodium azide and 2% sucrose. <i>Note that this product is shipped as lyophilized powder to China customers.</i>
Purification:	Affinity Purified
Conjugation:	Unconjugated
Storage:	Store at -20°C as received.
Stability:	Stable for 12 months from date of receipt.
Predicted Protein Size:	67 kDa
Gene Name:	leucine rich repeat and Ig domain containing 2
Database Link:	NP_689783 Entrez Gene 158038 Human Q7L985
Background:	The function of this protein remains unknown.
Synonyms:	LERN3; LRRN6C
Note:	Immunogen sequence homology: Dog: 100%; Pig: 100%; Horse: 100%; Human: 100%; Mouse: 93%; Bovine: 93%; Guinea pig: 93%; Zebrafish: 86%
Protein Families:	Druggable Genome, Transmembrane



[View online »](#)

Product images:



Host: Rabbit; Target Name: LINGO2; Sample
Tissue: HeLa Whole Cell lysates; Antibody Dilution:
1.0 ug/ml