

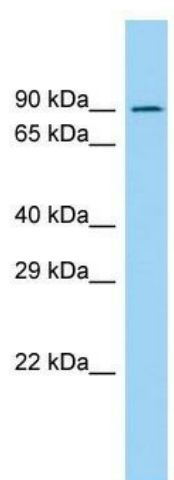
## Product datasheet for TA333480

### RASEF Rabbit Polyclonal Antibody

#### Product data:

Product Type:	Primary Antibodies
Applications:	WB
Recommended Dilution:	WB
Reactivity:	Human
Host:	Rabbit
Isotype:	IgG
Clonality:	Polyclonal
Immunogen:	The immunogen for Anti-RASEF Antibody is: synthetic peptide directed towards the N-terminal region of Human RASEF. Synthetic peptide located within the following region: AQDKAAMQLSELEEEMDQRIQAAEHKTRKDEKRKAAEEALSDLRRQYETEV
Formulation:	Liquid. Purified antibody supplied in 1x PBS buffer with 0.09% (w/v) sodium azide and 2% sucrose.
Purification:	Affinity Purified
Conjugation:	Unconjugated
Storage:	Store at -20°C as received.
Stability:	Stable for 12 months from date of receipt.
Predicted Protein Size:	81 kDa
Gene Name:	RAS and EF-hand domain containing
Database Link:	<a href="#">NP_689786</a> <a href="#">Entrez Gene 158158 Human</a> <a href="#">Q8IZ41</a>
Background:	RASEF binds predominantly GDP, and also GTP.
Synonyms:	RAB45
Note:	Immunogen sequence homology: Dog: 100%; Pig: 100%; Horse: 100%; Human: 100%; Bovine: 100%; Rabbit: 100%; Guinea pig: 93%; Rat: 86%; Mouse: 79%
Protein Families:	Druggable Genome


[View online »](#)

**Product images:**


Host: Rabbit; Target Name: RASEF; Sample  
Tissue: Fetal Kidney lysates; Antibody Dilution: 1.0  
ug/ml