

Product datasheet for **TA333479**

DAND5 Rabbit Polyclonal Antibody

Product data:

Product Type:	Primary Antibodies
Applications:	WB
Recommended Dilution:	WB
Reactivity:	Human
Host:	Rabbit
Isotype:	IgG
Clonality:	Polyclonal
Immunogen:	The immunogen for Anti-DAND5 Antibody is: synthetic peptide directed towards the C-terminal region of Human DAND5. Synthetic peptide located within the following region: YIPGSDPTPLVLCNSCMPARKRWAPVVLWCLTGSSASRRRVKISTMLIEG
Formulation:	Liquid. Purified antibody supplied in 1x PBS buffer with 0.09% (w/v) sodium azide and 2% sucrose. <i>Note that this product is shipped as lyophilized powder to China customers.</i>
Purification:	Affinity Purified
Conjugation:	Unconjugated
Storage:	Store at -20°C as received.
Stability:	Stable for 12 months from date of receipt.
Predicted Protein Size:	21 kDa
Gene Name:	DAN domain BMP antagonist family member 5
Database Link:	NP_689867 Entrez Gene 199699 Human Q8N907



[View online »](#)

Background:

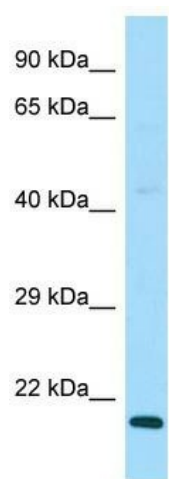
This gene encodes a member of the BMP (bone morphogenic protein) antagonist family. Like BMPs, BMP antagonists contain cystine knots and typically form homo- and heterodimers. The CAN (cerberus and dan) subfamily of BMP antagonists, to which this gene belongs, is characterized by a C-terminal cystine knot with an eight-membered ring. The antagonistic effect of the secreted protein encoded by this gene is likely due to its direct binding to BMP proteins. As an antagonist of BMP, this gene may play a role in regulating organogenesis, body patterning, and tissue differentiation. In mouse, this protein has been shown to bind Nodal and to inhibit the Nodal signaling pathway which patterns left/right body asymmetry.

Synonyms:

CER2; CERL2; CKTSF1B3; COCO; CRL2; DANTE; GREM3; SP1

Note:

Immunogen sequence homology: Human: 100%

Product images:

WB Suggested Anti-DAND5 Antibody; Titration:
1.0 ug/ml; Positive Control: MCF7 Whole Cell