

Product datasheet for **TA333478**

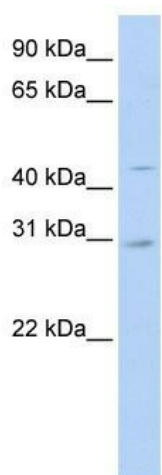
SLC10A4 Rabbit Polyclonal Antibody

Product data:

Product Type:	Primary Antibodies
Applications:	WB
Recommended Dilution:	WB
Reactivity:	Human
Host:	Rabbit
Isotype:	IgG
Clonality:	Polyclonal
Immunogen:	The immunogen for Anti-SLC10A4 Antibody: synthetic peptide directed towards the N terminal of human SLC10A4. Synthetic peptide located within the following region: DGNDNVTLFAPLLRDNYTLAPNASSLPGTDLALAPASSAGPGPGLSLG
Formulation:	Liquid. Purified antibody supplied in 1x PBS buffer with 0.09% (w/v) sodium azide and 2% sucrose. <i>Note that this product is shipped as lyophilized powder to China customers.</i>
Purification:	Affinity Purified
Conjugation:	Unconjugated
Storage:	Store at -20°C as received.
Stability:	Stable for 12 months from date of receipt.
Predicted Protein Size:	46 kDa
Gene Name:	solute carrier family 10 member 4
Database Link:	NP_689892 Entrez Gene 201780 Human Q96EP9
Background:	SLC15A4 is the proton oligopeptide cotransporter. It transports free histidine and certain di- and tripeptides.
Synonyms:	P4
Note:	Immunogen sequence homology: Human: 100%; Pig: 92%; Rabbit: 85%; Bovine: 83%
Protein Families:	Druggable Genome, Transmembrane



[View online »](#)

Product images:

WB Suggested Anti-SLC10A4 Antibody Titration:
0.2-1 ug/ml; ELISA Titer: 1:312500; Positive
Control: 721_B cell lysate