

Product datasheet for **TA333477**

SAMD9L Rabbit Polyclonal Antibody

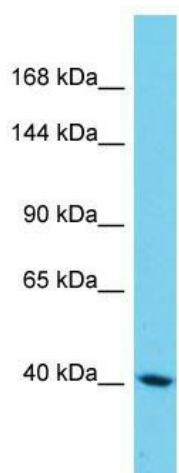
Product data:

Product Type:	Primary Antibodies
Applications:	WB
Recommended Dilution:	WB
Reactivity:	Human
Host:	Rabbit
Isotype:	IgG
Clonality:	Polyclonal
Immunogen:	The immunogen for Anti-SAMD9L Antibody is: synthetic peptide directed towards the N-terminal region of Human SAMD9L. Synthetic peptide located within the following region: LIKRSYNKLNLSKSPESDNHDPGQLDNSKPSKTEHQKNPKHTKKEEENSMS
Formulation:	Liquid. Purified antibody supplied in 1x PBS buffer with 0.09% (w/v) sodium azide and 2% sucrose.
Purification:	Affinity Purified
Conjugation:	Unconjugated
Storage:	Store at -20°C as received.
Stability:	Stable for 12 months from date of receipt.
Predicted Protein Size:	44 kDa
Gene Name:	sterile alpha motif domain containing 9 like
Database Link:	NP_689916 Entrez Gene 219285 Human Q8IVG5
Background:	The function of this protein remains unknown.
Synonyms:	ATXPC; C7orf6; DRIF2; UEF1
Note:	Immunogen sequence homology: Human: 100%



[View online »](#)

Product images:



Host: Rabbit; Target Name: SAM9L; Sample
Tissue: HepG2 Whole Cell lysates; Antibody
Dilution: 1.0 ug/ml