

## Product datasheet for **TA333474**

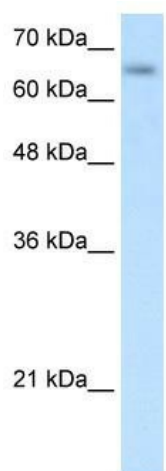
### SLC39A12 Rabbit Polyclonal Antibody

#### Product data:

Product Type:	Primary Antibodies
Applications:	WB
Recommended Dilution:	WB
Reactivity:	Human
Host:	Rabbit
Isotype:	IgG
Clonality:	Polyclonal
Immunogen:	The immunogen for Anti-SLC39A12 Antibody: synthetic peptide directed towards the N terminal of human SLC39A12. Synthetic peptide located within the following region: MCFRTKLSVSWVPLFLLLSRVFSTETDKPSAQDSRSRGSSGQPADLLQVL
Formulation:	Liquid. Purified antibody supplied in 1x PBS buffer with 0.09% (w/v) sodium azide and 2% sucrose. <i>Note that this product is shipped as lyophilized powder to China customers.</i>
Purification:	Affinity Purified
Conjugation:	Unconjugated
Storage:	Store at -20°C as received.
Stability:	Stable for 12 months from date of receipt.
Predicted Protein Size:	73 kDa
Gene Name:	solute carrier family 39 member 12
Database Link:	<a href="#">NP_689938</a> <a href="#">Entrez Gene 221074 Human</a> <a href="#">Q504Y0</a>
Background:	SLC39A12 may act as a zinc-influx transporter and also may be partly involved in the outbreak of schizophrenia.
Synonyms:	bA570F3.1; LZT-Hs8; ZIP-12
Note:	Immunogen sequence homology: Human: 100%; Horse: 85%; Bovine: 77%
Protein Families:	Transmembrane



[View online »](#)

**Product images:**

WB Suggested Anti-SLC39A12 Antibody Titration:  
0.2-1 ug/ml; Positive Control: Jurkat cell lysate