

Product datasheet for **TA333473**

OFCC1 Rabbit Polyclonal Antibody

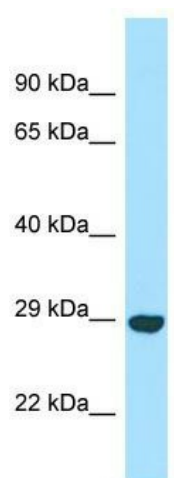
Product data:

| | |
|-------------------------|--|
| Product Type: | Primary Antibodies |
| Applications: | WB |
| Recommended Dilution: | WB |
| Reactivity: | Human |
| Host: | Rabbit |
| Isotype: | IgG |
| Clonality: | Polyclonal |
| Immunogen: | The immunogen for Anti-OFCC1 Antibody is: synthetic peptide directed towards the C-terminal region of Human OFCC1. Synthetic peptide located within the following region: ETLNSEAPGSSNKSHEIHKEASEATTAHLEEFQRSQKTIILLGSSPLEQE |
| Formulation: | Liquid. Purified antibody supplied in 1x PBS buffer with 0.09% (w/v) sodium azide and 2% sucrose. <i>Note that this product is shipped as lyophilized powder to China customers.</i> |
| Purification: | Affinity Purified |
| Conjugation: | Unconjugated |
| Storage: | Store at -20°C as received. |
| Stability: | Stable for 12 months from date of receipt. |
| Predicted Protein Size: | 25 kDa |
| Gene Name: | orofacial cleft 1 candidate 1 |
| Database Link: | NP_694548 Entrez Gene 266553 Human |
| Background: | The function of this protein remains unknown. |
| Synonyms: | MGC142101; MGC142103; MRDS1; orofacial cleft 1 candidate 1; orofacial clefting chromosomal breakpoint region 1; OTTHUMP00000039226 |
| Note: | Immunogen sequence homology: Human: 100% |



[View online »](#)

Product images:



WB Suggested Anti-OFCC1 Antibody; Titration: 1.0 ug/ml; Positive Control: RPMI-8226 Whole Cell