

## Product datasheet for TA333472

### C12orf59 (TMEM52B) Rabbit Polyclonal Antibody

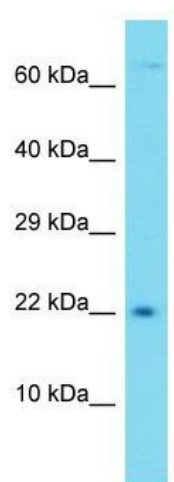
#### Product data:

Product Type:	Primary Antibodies
Applications:	WB
Recommended Dilution:	WB
Reactivity:	Human
Host:	Rabbit
Isotype:	IgG
Clonality:	Polyclonal
Immunogen:	The immunogen for Anti-TMEM52B Antibody is: synthetic peptide directed towards the C-terminal region of Human TMEM52B. Synthetic peptide located within the following region: LGQLPSSLDTLPGYEEALHMSRFTVAMCGQKAPDLPPVPEEKQLPPTKE
Formulation:	Liquid. Purified antibody supplied in 1x PBS buffer with 0.09% (w/v) sodium azide and 2% sucrose. <i>Note that this product is shipped as lyophilized powder to China customers.</i>
Purification:	Affinity Purified
Conjugation:	Unconjugated
Storage:	Store at -20°C as received.
Stability:	Stable for 12 months from date of receipt.
Predicted Protein Size:	20 kDa
Gene Name:	transmembrane protein 52B
Database Link:	<a href="#">NP_694567</a> <a href="#">Entrez Gene 120939 Human</a> <a href="#">Q4KMG9</a>
Background:	The function of this protein remains unknown.
Synonyms:	C12orf59
Note:	Immunogen sequence homology: Dog: 100%; Pig: 100%; Human: 100%; Rat: 93%; Bovine: 93%; Rabbit: 92%; Mouse: 86%
Protein Families:	Transmembrane



[View online »](#)

## Product images:



Host: Rabbit; Target Name: TMEM52B; Sample  
Tissue: Jurkat Whole Cell lysates; Antibody  
Dilution: 1.0 ug/ml.