

Product datasheet for **TA333469**

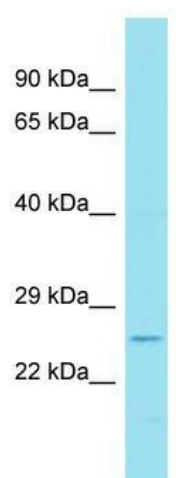
TMEM174 Rabbit Polyclonal Antibody

Product data:

Product Type:	Primary Antibodies
Applications:	WB
Recommended Dilution:	WB
Reactivity:	Human
Host:	Rabbit
Isotype:	IgG
Clonality:	Polyclonal
Immunogen:	The immunogen for Anti-TMEM174 Antibody is: synthetic peptide directed towards the C-terminal region of Human TMEM174. Synthetic peptide located within the following region: VVDEGCLSFTDGGNHRPNPDVDQLEETQLEEEACACFSPPPYEEIYSLPR
Formulation:	Liquid. Purified antibody supplied in 1x PBS buffer with 0.09% (w/v) sodium azide and 2% sucrose. <i>Note that this product is shipped as lyophilized powder to China customers.</i>
Purification:	Affinity Purified
Conjugation:	Unconjugated
Storage:	Store at -20°C as received.
Stability:	Stable for 12 months from date of receipt.
Predicted Protein Size:	26 kDa
Gene Name:	transmembrane protein 174
Database Link:	NP_694949 Entrez Gene 134288 Human Q8WUU8
Background:	The function of this protein remains unknown.
Synonyms:	FLJ31268; MGC13034
Note:	Immunogen sequence homology: Human: 100%
Protein Families:	Transmembrane



[View online »](#)

Product images:

Host: Rabbit; Target Name: TMEM174; Sample
Tissue: Jurkat Whole Cell lysates; Antibody
Dilution: 1.0 ug/ml.