

Product datasheet for **TA333468**

COL6A5 Rabbit Polyclonal Antibody

Product data:

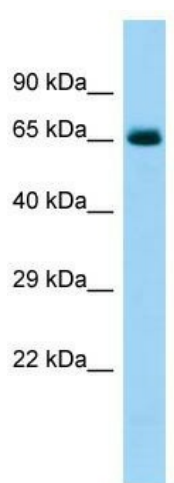
Product Type:	Primary Antibodies
Applications:	WB
Recommended Dilution:	WB
Reactivity:	Human
Host:	Rabbit
Isotype:	IgG
Clonality:	Polyclonal
Immunogen:	The immunogen for Anti-COL6A5 Antibody is: synthetic peptide directed towards the C-terminal region of Human COL6A5. Synthetic peptide located within the following region: RNVSLRAKCGYSIFVFSFGPKHNDKELEELASHPLDHHLVQLGRTHKPD
Formulation:	Liquid. Purified antibody supplied in 1x PBS buffer with 0.09% (w/v) sodium azide and 2% sucrose.
Purification:	Affinity Purified
Conjugation:	Unconjugated
Storage:	Store at -20°C as received.
Stability:	Stable for 12 months from date of receipt.
Predicted Protein Size:	62 kDa
Gene Name:	collagen type VI alpha 5
Database Link:	NP_694996 Entrez Gene 256076 Human A8TX70
Background:	The protein encoded by this gene is a collagen that contains N- and C-terminal von Willebrand factor A-like domains. The encoded protein may interact with the alpha 1 and alpha 2 chains of collagen VI to form the complete collagen VI trimer. Sequence polymorphisms in this gene have been linked to atopic dermatitis (eczema). Two transcript variants, one protein-coding and the other probably not protein-coding, have been found for this gene.
Synonyms:	COL29A1; VWA4



[View online »](#)

Note: Immunogen sequence homology: Human: 100%; Dog: 93%; Pig: 93%; Horse: 93%; Bovine: 93%; Guinea pig: 93%; Rat: 86%; Mouse: 86%; Rabbit: 79%

Product images:



Host: Rabbit; Target Name: COL6A5; Sample Tissue: Fetal Heart lysates; Antibody Dilution: 1.0 ug/ml